

RIVERSTONE TERRACE

The Riverstone Terrace also known as Craig's flat subdivision used the street naming theme of well-known Upper Hutt citizens who made a contribution to the Upper Hutt district and/or New Zealand.

Betty Watt Grove



(Reference Goggle Images Stuff Dominion Post website Betty Watt)

Betty Watt nee Thorner

Betty Watt Grove was named after Betty Watt (nee Thorner). Betty was New Zealand representative in Cricket (1956-1965) and Hockey (1960-1965). In Upper Hutt she was known for working with the elderly and bereavement support

Birkinshaw Grove



(Reference UH City Recollect website Grant Birkinshaw 1987 02 17 01)

Grant Birkinshaw

Birkinshaw Grove was named after Grant Birkinshaw the Upper Hutt City Council Planner who was involved at the beginning of the Riverstone Terrace / Craig's Flat project. He was the City Planner for Upper Hutt for 17 years from January 1985 to December 2001.

Colin Guppy Crescent



(Reference Goggle Images New Zealand Police Dog Trust website)

Colin Guppy

Colin Guppy was named after the late Colin Guppy of Upper Hutt a pioneer of the police dog handling service established at Trentham in 1957.

Cory Jane Grove



(Reference Goggle Images Cory Jane Wikipedia the free encyclopedia)

Cory Jane

Cory Jane Grove was named after Cory Steven Jane of Upper Hutt who was a New Zealand international rugby union player our local All Black. The Riverstone Terrace subdivision theme was well known Upper Hutt citizens who made a contribution to the district and/or country

Cosgrove Rise



(Reference UH City Recollect website Ernie Cosgrove Pumpkin Cottage UH Leader 2000_05_10)

Ernie Cosgrove

Cosgrove Rise was named after Ernie Cosgrove. Ernie and his wife operated Efieldoog the garden and gallery in Akatarawa. He collected paintings by artists who attended the Pumpkin Cottage art school operated by James Nairn and donated the collection to the Expressions gallery.

Frankie Stevens Place



(Reference UH City Recollect website Wellington Trade Fair Frankie Stevens UH Leader 1986 09 16 04)

Frankie Stevens

Frankie Stevens Place was named after Frankie Stevens (Francis Donald McKenzie Stevenson) of Upper Hutt a national and International singer and entertainer.

Garrett Place



(Reference UH City Recollect website Civic Awards Elizabeth Garratt UH Leader 1987 07 07 05)

Betty Garrett

Garrett Place was named after Betty Garrett the plant lady who raised and sold plants for many years. She gave the proceeds of the sales to charitable organizations and needy people in the Upper Hutt community. The Riverstone Terrace subdivision theme was well known Upper Hutt citizens who made a contribution to the district and/or country

Grace Nicholls Grove



(Reference UH City Recollect website Grace Nicholls and daughters 06 May 1982 Oral History collection)

Grace Nicholls

Grace Nicholls Grove was named after Grace Nicholls QSM, JP, of Upper Hutt, foundation member of Orongomai Marae, Mawaihakona Maori Cultural group, Awakairangi Maori Women's Welfare League and responsible for establishing numerous management training and education programmes. In 1982 Grace received the Queens Service medal at Government House.

James Nairn Grove



(Reference UH City Recollect website Pumpkin Cottage Silverstream P49-1-5)

James Nairn

James Nairn Grove was named after James Nairn who was the founder of the Art school at Pumpkin Cottage in Silverstream. Around 1894 onwards James attracted many well-known artists to the cottage. Artists were internationally recognized as having attended the Nairn School.

Kirton Drive



(Reference Upper Hutt City Council Recollect website 1998-2001 Mayor Rex Kirton & Councillors P2-720-1788)

Rex Kirton

Kirton Drive was named after Rex Stratton Kirton. Rex was the Mayor of Upper Hutt for 24 years (1977 - 2001) and one of the longest serving mayors. He was also one of the Riverstone Terrace / Craig's Flat project's facilitators.

Lila Gillies Lane



(Reference Goggle Images Linked in website Malcolm Gillies Managing Director at Gillies Group)

Malcolm John Gillies son of Lillas Mavis Gillies

Lila Gillies Lane was named after Lillias Mavis Gillies the mother Malcolm Gillies who was also one of the major developers of Riverstone Terrace. Lillias Mavis Smith was born 25 November 1918 and died aged 93 years on 15 September 2012 in New Zealand. Lillias married Harold John Gillies born 13 January 1914 died 08 September 1983 Auckland New Zealand.

McEwen Crescent



(Reference Upper Hutt City Council Recollect website donated by Andrew and Mary McEwen)

Jock McEwen

McEwen Crescent was named after Jock McEwen who was president and tutor of Mawaihakona Maori Cultural group and foundation member of Orongomai Marae. He was the master carver for Kahukura, the meeting house at Orongomai Marae in Upper Hutt.

Ormrod Grove

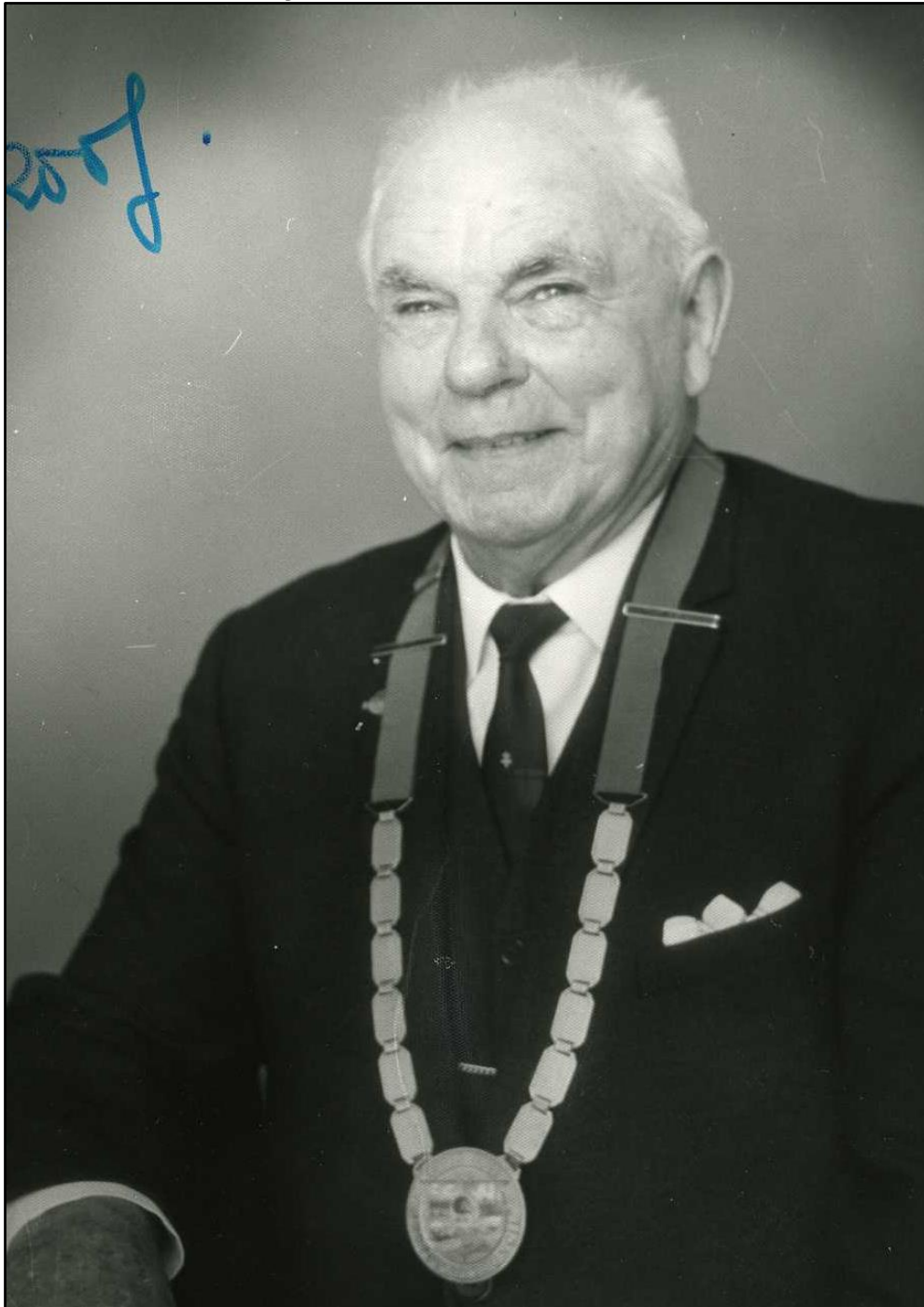


(Reference UH City Recollect website Doug Ormrod UH Leader 1989 09 26 07)

Douglas Ernest Ormrod

Ormrod Grove was named after Douglas Ernest Ormrod who served on the Upper Hutt City Council from 1977 to 1992 and Deputy Mayor 1989-1992. He was a Council representative on the District Road Council during the formation of River Road and a prominent Rotarian.

Percy Kinsman Crescent



(Reference UH City Recollect website Kinsman at home P1-5102-7492)

Percy H Kinsman

Percy Kinsman Crescent was named after Percy H Kinsman the Mayor of the Upper Hutt Borough Council from 1959 to 1966 and Upper Hutt City Council from 1966 to 1968.

Ronald Scott Grove



(Reference UH City Recollect website CIT Sir Robert Scott Leader 1996 11 27 7)

Sir Robert Scott

Ronald Scott Grove was named after Sir Ronald Scott of Upper Hutt who is well known for his involvement in the New Zealand sports.

Swain Grove



(Reference UH City Recollect website Paul Swain Hutt MPs Collection)

Paul Desmond Swain

Swain Grove was named after Paul Desmond Swain who was a Member of Parliament for the Rimutaka Electorate from 1996 to 2008.