

## SILVERSTREAM BRICK AND TILE COMPANY

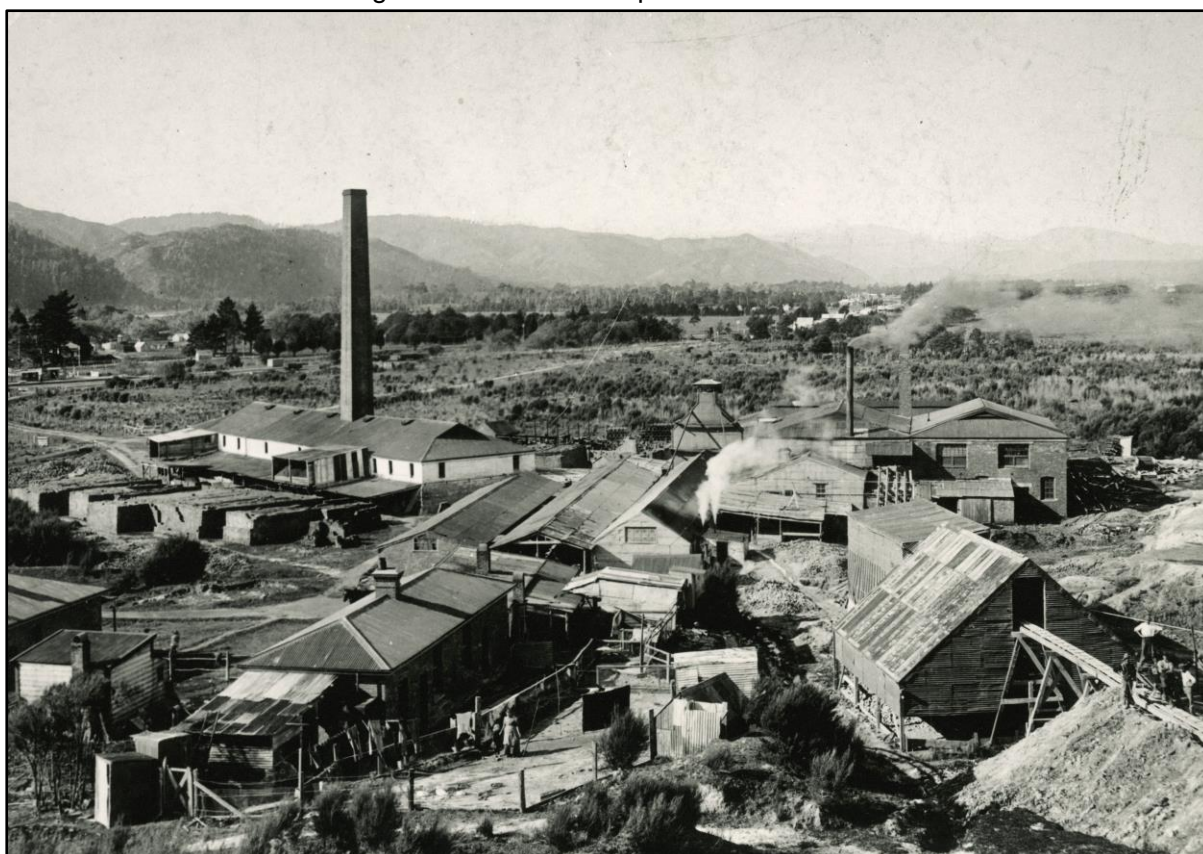
On the 15 May 1901 the new Silverstream Brick and Tile Company was officially opened in what is now known as Kiln Street in Silverstream.

Other information recorded that the Silverstream Brick & Tile Company operated a brick-works at the end of what is now Kiln Street from 1899. Further research has proved this is not correct.

*(Reference Upper Hutt City Library Heritage collection Recollect website Silverstream Amalgamated Brick and Pipe Co brickworks Kiln Street 1920 collection Heretaunga/Pinehaven Community Council P4-152-2151)*

Many Years later the Silverstream Brick and Tile Company became part of the Amalgamated Brick and Pipe Company (Wellington) Limited along with other Wellington brick companies.

Silverstream Amalgamated Brick and Pipe Co. brickworks Kiln Street 1920



*(Reference Upper Hutt City Library Heritage collection Recollect website Silverstream Amalgamated Brick and Pipe Co brickworks Kiln Street 1920 collection Heretaunga/Pinehaven Community Council P4-152-2151)*

*The Silverstream Brick & Tile Company operated a brickworks at the end of what is now Kiln Street from 1899. The brickworks, seen here in 1920, used clay excavated from the nearby hills brought down by flying fox. At right you can see men beside a rail track waiting to receive a delivery. The business later operated as the Amalgamated Brick and Pipe Company before eventually closing in the 1970s. The works were rebuilt in 1952. The 1952 chimney was demolished in July 1977; when 20 gelignite charges failed to tell it, it was found that a pipe to the main building had not been disconnected (Leader', August 2). Planned alterations in 1967 led to complaints from residents; the model shown had not matched the plan, there were noise from*

*weekend work, sulphurous fumes and ash, and industrial traffic; promised trees had not been planted, and stockpiles would be unsightly ('Leader', October 25). The company name is that in use when it closed.*

*(Reference Upper Hutt City Library Heritage collection Recollect website Silverstream Amalgamated Brick and Pipe Co brickworks Kiln Street 1920 collection Heretaunga/Pinehaven Community Council P4-152-2151)*

Comment – Messrs Pallister, Tonks and Jones would eventually become shareholders of the Silverstream Brick and Tile Company. In 1899 they were advertising for staff for their Wellington brick-works company not Silverstream.

*(Reference Papers past website Evening Post newspaper 04, 05, 06 January 1899 page 1)*

Evening Post newspaper 22 January 1901

The brick and tile company is about to start operations in the Silverstream district. The company has for the last five or six months been testing clay along both the Government and Manawatu railway lines and it finds the Silverstream article most suitable for its purpose. It will be placing men to work in the course of a few days and an order has been given for the manufacture of machinery.

*(Reference Papers past website Evening Post newspaper 22 January 1901 page 4)*

Evening Post newspaper 04 February 1901

Local and General – The company recently formed in Wellington to manufacture bricks and tiles at Silverstream has made arrangements to conduct the industry upon a large scale. It has secured a portion of Mr Charles Seager's property for its operations and a start has been made with the preliminary work. A Hoffman kiln is to be built without delay on a site contiguous to the railway line and orders for the necessary machinery have been placed in Wellington. Messrs Crabtree and Sons have been entrusted with the construction of a machine capable of making 1600 bricks a day and Messrs D Robertson and Co are to manufacture an engine and a boiler of 16 horse-power nominal.

*(Reference Papers past website Evening Post newspaper 04 February 1901 page 4)*

Evening Post newspaper 16 February 1901

To Silverstream and Upper Hutt Woodcutters – Wanted Tenders for Cutting, Carting and Stacking 100 cords of Firewood 6ft lengths for the Silverstream Brick and Tile Company. W A Chote Farish Street.

*(Reference Papers past website Evening Post newspaper 16 February 1901 page 1)*

New Zealand Mail newspaper 28 March 1901

The Brick and Tile Company which proposes to begin work at Silverstream is preparing to start active operations at once. A new steam-engine and boiler of twenty-five horse power have just been completed to the company's order by Messrs Robertson and Co.

*(Reference Papers past website New Zealand Mail newspaper 28 March 1901 page 55)*

Evening Post newspaper 15 May 1901

The formal opening of the Silverstream Brick and Tile Company's works took place today. The company which is composed of Wellington business men has secured 60 acres of clay land near Mr C Seagar's homestead at Silverstream and has erected a plant capable of turning out 16,000 bricks a day. The brickmaking machine was made by Messrs Crabtree and Sons and the engine and boiler (25 horse-power nominal) were manufactured by Messrs D Robertson and Co.

*(Reference Papers past website Evening Post newspaper 15 May 1901 page 4)*

Evening Post newspaper 16 May 1901

Local and General – The scene of the murder of Hawthorne by Philpott some years ago is to be turned into a potter's field in connection with the new Silverstream brickworks.

*(Reference Papers past website Evening Post newspaper 16 May 1901 page 4)*

Evening Post newspaper 11 June 1901

Hutt County Council – The application of the Silverstream Brick and Tile Company for registration of its new premises at Silverstream as a factory was granted.

*(Reference Papers past website Evening Post newspaper 11 June 1901 page 6)*

Evening Post newspaper 25 September 1901

The Wellington Conciliation Board met yesterday to hear the evidence in the dispute between the Wellington Brick, Tile, Drain and Other Pipe and Pottery Makers Union and the employers. Mr W A Chote appeared for the Silverstream Brick and Tile Company and Mr W C Stephens for the Wellington Brick Company.

*(Reference Papers past website Evening Post newspaper 25 September 1901 page 7)*

New Zealand Times newspaper 20 December 1901

NOTICE – It is hereby notified that Mr Frank Tonks has this day retired from the Partnership heretofore carried on by the undersigned under the name of Silverstream Brick and Tile Company. Dated at Wellington this 19<sup>th</sup> day of December 1901. W A CHOTE – FRANK TONKS - JOHN RIGHT – Witness J P Campbell Solicitor wellington

*(Reference Papers past website New Zealand Times newspaper 20 December 1901 page 6))*

Free Lance newspaper 16 August 1902

In the course of time Hawthorne disappeared. Mr Menzies grew suspicious and conveyed his suspicions to the police. He searched the neighbourhood for days and weeks and at last found the missing man's body huddled up in a hole away up in the scanty bush on the brow of the hill immediately behind where the Silverstream brickworks are now located. Mr Menzies is not an over-quiet man in his calmest moods but he was naturally greatly excited that day when the police and Dr Cahill exhumed the body of the murdered man. The credit of the discovery was wholly Mr Menzies. Philpott was tried found guilty and hung for his dastardly deed. Strange that this memory should be revived by the presentation of a military medal.

*(Reference Papers past website Free Lance newspaper 16 August 1902 page 3)*

New Zealand Mail newspaper 25 November 1903

Long the line - Affairs in the Hutt valley and beyond

THE UPPER HUTT - Plenty room at the Upper Hutt for workmen said an old and respected settler from that part to a Times representative the other morning. If the Government will only give us encouragement in the matter of an early train to town in the morning and back again at night we could find room for hundreds of their own workers at Petone alone who find it expensive to live in rented houses. The land is to be acquired cheaply now and from Trentham to Upper Hutt should become Government property in view of settlement by State employees in the near future whom it is more than likely much of the work done in Petone now will be executed under more favourable conditions in less congested areas and handled more expeditiously. A nominal rental charged for workmen's homes would alone pay interest on the money involved in the purchase of a most necessary adjunct to State enterprise besides adding to the comfort of the large body of men so employed. At present workmen prefer living close to Wellington but with a suitable time-table and quick-running trains at cheaper rate the inducement to settle where land is cheaper and better would be found sufficient to induce hundreds to settle in a warmer and more sheltered part of the country than they have hitherto known. All things to them as waits but why not have an alteration in the December time-table whereby a working man living at the

Upper Hutt and intermediate station between there and Lower Hutt could join his fellow workers at the latter station into town of a morning and back again at night. If the Government will only find the trains the Upper Hutt will supply the people and that in a very few month. At present it simply means exclusion to even those engaged in office work and mercantile pursuits the first train of a morning reaching town (after an half-hour wait at Lower Hutt) at 9.15 and leaving again at 4.7 pm and 4.30 pm an arrangement entirely inadequate and counter to all means of inducing workmen to live in healthy localities. But continued the worthy settler we'll have trains yet. I have for years advocated for them and intend to again interview the member for the district and Mr Field about getting the time-tables altered a shade to suit settlement and I believe he will gain his day yet.

THE SILVERSTREAM BRICKWORKS are turning out bricks in tens of then sands the workmen, working night and day but the demand is far greater than the supply and the chief difficulty is found in getting sufficient railway trucks to cart away the orders. The amount of fishing done in the Hutt river seems limited this season Fishermen prefer the Waikanae as much larger takes are recorded. It was no unusual thing last summer to see a dozen fishermen returning home by Sunday trains without a fish to the credit of any. Yet how they managed to make interesting the journey by relating the many instances where with reasonable skill they might have landed a beauty. But the inevitable mishap prevented and they came home laden with anecdotes tired and happy. I prefer a milder and less exciting sport.

The vigilance of the search parties out to assist in the recovery of the body of the lad drowned in the Hutt river recently is commendable. Long and tedious work it has been probing every likely and unlikely spot for miles with grappling irons and dynamiting the deeper pools here and there along rocky ledges of thin high embankments nature has provided but alike with scant success. Men riding men walking. The services of Constable Thompson are inestimable in a place like the Upper Hutt, whereas police officer, court orderly and various other things he incessantly and uncomplainingly labours with a will which alone in this instance makes his position a happy one. Such officers it is as these who help to make the police force of New Zealand respected in any community. One night I called on him and he looked real fagged after a hot day's dragging the river in a fruitless endeavour to ascertain the whereabouts of the lad mentioned and was going to ride several miles again that night to make further inquiries about an alleged rumour to the effect of the body being found at Belmont. I know him to be a little adverse to publicity in its fulsomeness but think he needs a word of encouragement now and then.

*(Reference Papers past website New Zealand Mail newspaper 25 November 1903 page 11)*

New Zealand Mail newspaper 03 August 1904

Upper Hutt – An accident happened at the Silverstream brock and tile works last week. Excavators were at work getting clay from a facing when without warning a mass fell and partially buried some of the workers. They were quickly extricated and although no bones were broken one of the sufferers received injuries to his head which rendered him unconscious for a time.

*(Reference Papers past website New Zealand Mail newspaper 03 August 1904 page 30)*

Circa 1905 Scanned photographs of Silverstream Brick and Tile Company

Title = View of brick works Silverstream Wellington Region New Zealand

Description = View of brick works Silverstream Wellington Region New Zealand. Photographed by Albert Percy Godber about 1905. Inscriptions Album page beneath image Silverstream brick works (post card)

*(Reference Digital NZ website & Alexander Turnbull Library [TAPUHI])*

Circa 1905 Scanned photographs of Silverstream Brick and Tile Company

Title = Stacks of clay drain pipes at brick works Silverstream Wellington Region New Zealand

Description = Stacks of clay drain pipes at a brickworks Silverstream Wellington Region New Zealand. Photographed by Albert Percy Godber about 1905

*(Reference Digital NZ website & Alexander Turnbull Library [TAPUHI])*

Lyttelton Times newspaper 31 July 1906

To Days Telegrams by Press Association – A young man named Ambrose Thomas Preston employed at the Silverstream brickworks was accidentally shot dead by a companion while out pig-shooting at Hayward's on Saturday. He has no relatives in the colony. At the inquest a verdict was returned of "Accidental death".

*(Reference Papers past website Lyttelton Times newspaper 31 July 1906 page 9)*

New Zealand Mail newspaper 22 September 1906

The Silverstream Brick and Tile Company are now taking orders for Field Pipes in large quantities. 3 inch 9 shilling and 6 pence per hundred feet – 4 inch 12 shillings 6 pence per hundred feet – Bricks, Drain Pipes, Chimney Pots Etc., In any quantity. We have also a quantity of second-class two-feet flanged Drain Pipes that we would quote to clear stock. All goods free on truck at the works unless other arrangements are made. W A Chote, Manager, Office, Farish Street, Wellington.

*(Reference Papers past website New Zealand Mail newspaper 22 September 1906 page 14)*

Dominion newspaper 15 February 1908

Certain local wants of the Silverstream district were touched upon in a report which was presented to the Wellington Provincial Industrial Association by a Committee last night. The committee had visited the Silverstream brickworks and after describing that industry the report concluded: "The committee would point out that a railway station-master is much needed at the Silverstream railway station. A large proportion of Wellington's milk supply comes in from Silverstream and the railway guard has at present to see to the checking of all the milk cans. In the opinion of your committee too it would be worth the Government's while to have a post and telegraph office, savings bank and money order office there. All might be worked from the railway station. The population of Silverstream warrants all this.

*(Reference Papers past website Dominion newspaper 15 February 1908 page 6)*

Evening Post newspaper 16 February 1909

Wanted General Servant. Apply Mrs James Harrop care of Silverstream Brick and Tile Company. Fare paid.

*(Reference Papers past website Evening Post newspaper 16 February 1909 page 1)*

Evening Post newspaper 08 July 1911

Wanted good Brickyard Hands day or piece work. Silverstream Brickworks, Silverstream.

*(Reference Papers Past website Evening Post newspaper 08 July 1911 page 1)*

Hutt Valley Independent 26 August 1911

District News – Mr J Wright of the Silverstream Brick and Tiles Company is laid up with an attack of internal inflammation.

*(Reference Papers past website Hutt Valley Independent 26 August 1911 page 2)*

Evening Post newspaper 26 April 1912

The employees of the Silverstream Brick and Tile Co Ltd last evening presented Mr T A Clear (their manager) with a silver tea-pot upon which was inscribed the name of Mr and Mrs Clear and a wish that they may enjoy health and happiness in Australia for which they depart very shortly.

*(Reference Papers past website Evening Post newspaper 26 April 1912 page 7)*

Hutt Valley Independent newspaper 28 September 1912

Accident – On Wednesday last an employee of the Silverstream Brick and Tile Company named Andrew Clark (a brother of Mrs Crennell of Upper Hutt) has the misfortune to get one of his hands entangled in a cutting machine and it is reported has two fingers severed. The injured man was attended to by Dr Kemp and is doing well as can be expected

*(Reference Papers past website Hutt Valley Independent newspaper 28 September 1912 page 2)*

Hutt Valley Independent 05 July 1913

Whilst engaged in bush falling at Little Akatarawa last week Samuel Blood recently of Silverstream Brickworks received a severe gash on the head with an axe and was attended to by the local medico.

*(Reference Papers past website Hutt Valley Independent 05 July 1913 page 2)*

Evening Post newspaper 11, 12 July 1913

Notice of Dissolution of Partnership – The Partnership hitherto existing between William Alfred Chote, Charles Pallister, Thomas Raymond Jones and John Wright trading as the Silverstream Brick and Tile Company has been Dissolved as from the 11<sup>th</sup> July 1913 and the business will in future be carried on by Thomas Raymond Jones the elder, John Wright and Thomas Raymond Jones the younger under the same style as before.

*(Reference Papers past website Evening Post newspaper 11, 12 July 1913 page 12)*

New Zealand Times newspaper 25 August 1913

On the occasion of severing his connection with the Silverstream Brick and Tile Company on account of illness Mr James Harrop (who has been connected with the firm since its inception) was presented by the employees with a handsome timepiece suitable inscription as a mark of esteem.

*(Reference Papers past website New Zealand Times newspaper 25 August 1913 page 3)*

Evening Post newspaper 05 December 1913

Brickworks Close Down – The shortage of coal is seriously affecting the brick-making industry in Wellington. The Newton Building Company and the Silverstream Brick Company have had to shut down and next week Mr Enoch Tonks of Webb Street will be compelled to do likewise. There are the largest brick works in this district.

*(Reference Papers past website Evening Post newspaper 05 December 1913 page 8)*

Hutt Valley Independent 01 June 1918

Twelve shillings a day is offered for men to work at the Silverstream Brick-works.

*(Reference Papers past website Hutt Valley Independent 01 June 1918 page 4)*

[1920 photo on first page of this document] - The brickworks, seen here in 1920, used clay excavated from the nearby hills brought down by flying fox. At right you can see men beside a rail track waiting to receive a delivery.

*(Reference Upper Hutt City Library Heritage collection Recollect website Silverstream Amalgamated Brick and Pipe Co brickworks Kiln Street 1920 collection Heretaunga/Pinehaven Community Council P4-152-2151)*

Evening Post newspaper 21 July 1920

Men wanted for Silverstream Brickworks, top wages suitable men. Apply Silverstream Brick and Rile Co., Silverstream

*(Reference Papers past website Evening Post newspaper 21 July 1920 page 3)*

Circa 1922 Scanned photograph of Silverstream Brick and Tile Company

Title = Steam digger at the Silverstream Brick and Tile Company Upper Hutt Wellington [horse also in the photograph]

Description = Steam Digger at the Silverstream Brick and Tile Company, Upper Hutt, Wellington. Man standing on digger is probably P Daffton. Photograph taken circa 1922 by A P Godber  
(Reference Digital NZ website & Alexander Turnbull Library [TAPUHI])

#### Circa 1922 Scanned photographs of Silverstream Brick and Tile Company

Title = Steam digger at the brickworks of the Silverstream Brick & Tile Company 1922

Description = View of a steam digger at the brick works of the Silverstream Brick & Tile Company. Photographed by A P Godber circa 1922. Three men are in this picture, two standing on the ground, and one standing on the digger. One of the men (probably the man on the digger) is identified as P Dafforn. Dated from other images in Godber Album Vol 109 (PA1-q-102)

(Reference Digital NZ website & Alexander Turnbull Library [TAPUHI])

#### Circa 1924 scanned photographs of Silverstream Brick and Tile Company

Title = Truck with the first pipes leaded from the Silverstream Brick and Tile Company Upper Hutt

Description = Truck with the first pipes leaded from the Silverstream Brick and Tile Company kiln, Upper Hutt, Wellington, circa 1924. Blachem Paul is on top of the truck. From left? Frank Jones, Harry Edwards, neighbours, Fred Ching. Photographer unidentified. Other – further notes on file print read NB – Kiln chimney built by a Mr Huggins + Mr Huggins + Mr Cudby + Tom Not quite sure but a Mr Mincham. Source of description information – Notes on file print.

(Reference Digital NZ website reference to Alexander Turnbull Library)

Hutt News 19 September 1929

Borough Council Meeting – The Silverstream Amalgamated Brick and Tile Company wrote complaining that the recent rain had caused Kiln Road to be flooded and requesting that efficient storm-water drains be constructed.

(Reference Papers past website Hutt News newspaper 19 September 1929 page 8)

Dominion newspaper 26 November 1929

Competent Fitter Wanted Immediately Silverstream Brickworks.

(Reference Papers past website Dominion newspaper 26 November 1929 page 1)

#### 1930 Scanned photographs of Silverstream Brick and Tile Company

Title = Interior view of the brickworks of the Silverstream Brick & Tile Company [kiln]

Description = Interior view of the brickworks of the Silverstream Brick & Tile Company showing a load of bricks through an archway of a furnace. Photographed by A P Godber in 1930  
Description and date from Godber file held in Photographic Archives

(Reference Digital NZ website & Alexander Turnbull Library [TAPUHI])

#### 1930 Scanned photographs of Silverstream Brick and Tile Company

Title = Exterior view of the brickworks of the Silverstream Brick & Tile Company 1930

Description = Exterior view of the brickworks of the Silverstream Brick & Tile Company. Photographed by A P Godber in 1930. Description and date from Godber file held in Photographic Archives

(Reference Digital NZ website & Alexander Turnbull Library [TAPUHI])

#### 1930 Scanned photographs of Silverstream Brick and Tile Company

Title = Silverstream Brick & Tile Company factory 1930

Description = Silverstream Brick & Tile Company factory. Photographed by A P Godber in 1930. Description and date from Godber own index filed in Photographic Archives

*(Reference Digital NZ website & Alexander Turnbull Library [TAPUHI])*

### 1930 Scanned photographs of Silverstream Brick and Tile Company

Title = View of the flying fox at the brickworks of the Silverstream Brick & Tile Company 1930

Description = View of the flying fox at the brickworks of the Silverstream Brick & Tile Company. Photographed by A P Godber in 1930. Description and date from Godber file held in Photographic Archives

*(Reference Digital NZ website & Alexander Turnbull Library [TAPUHI])*

### 1930 Scanned photographs of Silverstream Brick and Tile Company

Title = View from above of the flying fox at the brickworks of the Silverstream Brick & Tile Company 1930

Description = View of the flying fox at the brickworks of the Silverstream Brick & Tile Company. Photographed by A P Godber in 1930. Description and date from Godber own index filed in Photographic Archives.

*(Reference Digital NZ website & Alexander Turnbull Library [TAPUHI])*

In 1930 an artist Christopher Perkins displayed one of his painting of the Silverstream Brickworks at an exhibition.

*(Reference Papers past website Evening Post newspaper 26 September 1930 page 4)*

Comment – Christopher Edward Perkins (1891-1968) was an Artists and Art Teacher. There was a biography about the artists written by R D J Collins and first published in the Dictionary of New Zealand. Where is the painting of the Silverstream Brickworks now?

*(Reference Dictionary of New Zealand Biographies website teara.govt.nz)*

Evening Post newspaper 25 June 1942

Extensive Damage Serious Road Subsidence – [earthquake report on Hutt Valley] – In the Upper Hutt district two smoke stacks at the Silverstream brickworks collapsed but in the township only minor damage was done from falling chimneys and one small plate glass window was broken.

*(Reference Papers past website Evening Post newspaper 25 June 1942 page 6)*

The works were rebuilt in 1952.

*(Reference Upper Hutt City Library Heritage collection Recollect website Silverstream Amalgamated Brick and Pipe Co brickworks Kiln Street 1920 collection Heretaunga/Pinehaven Community Council P4-152-2151)*

Upper Hutt Leader 01 May 1952

Attention Upper Hutt Silverstream and Stokes Valley Residents – Labour required work near home – Labour is now required to staff our New Modern Glazed Earthenware Pipe Factory at Silverstream and this work should appeal to residents of Upper Hutt, Silverstream and surrounding Districts. The Management will be in attendance at the factory, Kiln Road (Opp Railway Station) Saturday 03<sup>rd</sup> May 1952 from 9 am to interview applicants and answer enquiries. Amalgamated Brick & Pipe Co. (Wgtn.) Limited Wellington.

*(Reference Upper Hutt City Library Heritage collection Recollect website Upper Hutt Leader 01 May 1952)*

[02 August 1952] - The 1952 chimney was demolished in July 1977; when 20 gelignite charges failed to tell it, it was found that a pipe to the main building had not been disconnected (Leader', August 2).

*(Reference Upper Hutt City Library Heritage collection Recollect website Silverstream Amalgamated Brick and Pipe Co brickworks Kiln Street 1920 collection Heretaunga/Pinehaven Community Council P4-152-2151)*

Upper Hutt Leader 05 May 1955



Qualified Teacher of Piano and Piano Accordion commencing lessons 23<sup>rd</sup> May. For enquiries apply to Mrs Eckersley Brickworks Kiln Street Silverstream

*(Reference Upper Hutt City Library Heritage collection Recollect website Upper Hutt Leader 05 May 1955)*

Upper Hutt Leader 06 July 1961

Assistant Yardman Silverstream – We have a vacancy at our glazed earthenware pipe works at Silverstream for an assistant to our yardman. Good Wages and regular overtime. Apply Mr S Clarke Upper Hutt 7149 after hours Upper Hutt 5040 Amalgamated Brick & Pipe Co (Wgtn) Ltd Kiln Street Silverstream

*(Reference Upper Hutt City Library Heritage collection Recollect website Upper Hutt Leader 06 July 1961)*

Upper Hutt Leader 18 April 1963

Workmen Upper Hutt Silverstream – Why not earn good wages plus bonus working in our pipe production team? Apply Mr Clarke phone 7149 Upper Hutt Kiln Street Silverstream Amalgamated Brick & Pipe Co (Wgtn) Ltd.

*(Reference Upper Hutt City Library Heritage collection Recollect website Upper Hutt Leader 18 April 1963)*

Upper Hut Leader 11 June 1964

Pipe Inspector – We require the services of a bright and conscientious workman as a Pipe Inspector at our Silverstream Factory. Apply to Mr S P ALPE Amalgamated Brick & Pipe Co Silverstream

*(Reference Upper Hutt City Library Heritage collection Recollect website Upper Hutt Leader 11 June 1964)*

Upper Hutt Leader 02 July 1964

Staff Vacancies – We required two conscientious workmen for positions in our Silverstream Factory. These are permanent positions for which a good wage and high bonuses are paid. Apply Amalgamated Brick & Pipe Co Silverstream

Pipe Inspector – We require the services of a bright and conscientious workman as a Pipe Inspector at our Silverstream factory. This is a permanent position and calls for a person who is capable of working steadily without constant oversight. Tuition in the work will be given to a new employee. Overtime is available and with a good bonus earning of £25 per week or more are achievable. Apply Amalgamated Brick & Pipe Co Silverstream.

*(Reference Upper Hutt City Library Heritage collection Recollect website Upper Hutt Leader 02 July 1964)*

Upper Hutt Leader 25 November 1964

Staff Vacancies - We have vacancies for two Conscientious workmen at our Silverstream Factory. Overtime is being worked and with a good bonus of £25 or more per week can be earned. Apply Amalgamated Brick & Pipe Co Ltd Kiln Street Silverstream

*(Reference Upper Hutt City Library Heritage collection Recollect website Upper Hutt Leader 25 November 1964)*

[25 October 1967] - Planned alterations in 1967 led to complaints from residents; the model shown had not matched the plan, there were noise from weekend work, sulphurous fumes and ash, and industrial traffic; promised trees had not been planted, and stockpiles would be unsightly ('Leader', October 25). The company name is that in use when it closed.

*(Reference Upper Hutt City Library Heritage collection Recollect website Silverstream Amalgamated Brick and Pipe Co brickworks Kiln Street 1920 collection Heretaunga/Pinehaven Community Council P4-152-2151)*

[1970s] - The business later operated as the Amalgamated Brick and Pipe Company before eventually closing in the 1970s.

*(Reference Upper Hutt City Library Heritage collection Recollect website Silverstream Amalgamated Brick and Pipe Co brickworks Kiln Street 1920 collection Heretaunga/Pinehaven Community Council P4-152-2151)*

**A – Z**  
**Owners – Shareholders – Managers - Employees**

**Samuel Peter ALPE**

- 0- Samuel Peter ALPE** born 14 August 1923 New Zealand died 2005 New Zealand married **Moira Elizabeth (ALPE)** born 20 April 1925 died 2023 New Zealand  
#Samuel Peter ALPE born 14 August 1923 New Zealand reference RGO NZ birth registration 1923 folio website 1923/18804 parents Jean Westwood and Frank Alpe  
#Apply to Mr S P ALPE Amalgamated Brick & Pipe Co Silverstream reference Upper Hutt Leader 11 June 1964  
#Samuel Peter ALPE 30 Courtenay Road company manager & Moira Elizabeth ALPE 30 Courtenay Road married 1966 Heretaunga Electoral Roll  
#Samuel Peter ALPE died 2005 New Zealand reference RGO NZ death registration 2005 folio website 2005/29895 born 14 August 1923  
#Moira Elizabeth ALPE died 2023 New Zealand reference RGO NZ death registration 2023 folio website 2023/37304 born 20 April 1925

**William Alfred CHOTE**

- 0- William Alfred CHOTE** born 1862 Hitchin Hertfordshire England died 03 June 1934 Wellington New Zealand 1<sup>st</sup> married 14 June 1882 New Zealand **Catherine (Kate) HAGAN** born 07 August 1860 Upper Hutt New Zealand died 06 August 1897 Upper Hutt New Zealand 2<sup>nd</sup> married 21 February 1899 New Zealand **Beatrice Ellen HAGAN** born 11 April 1878 Upper Hutt New Zealand died 28 January 1940 Otaki New Zealand  
#Notice – It is hereby notified that Mr Frank Tonks has this day retired from the Partnership heretofore carried on by the undersigned under the name of Silverstream Brick and Tile Company. Dated at Wellington this 19<sup>th</sup> day of December 1901. W A Chote – Frank Tonks - John Wright – Witness J P Campbell Solicitor Wellington reference Papers past website New Zealand Times newspaper 20 December 1901 page 6)  
#William Alfred CHOTE Wallace street contractor 1903 Newtown Electoral Roll  
#Notice of Dissolution of Partnership – The Partnership hitherto existing between William Alfred Chote, Charles Pallister, Thomas Raymond Jones and John Wright trading as the Silverstream Brick and Tile Company has been Dissolved as from the 11<sup>th</sup> July 1913 and the business will in future be carried on by Thomas Raymond Jones the elder, John Wright and Thomas Raymond Jones the younger under the same style as before reference Papers past website Evening Post newspaper 11 July 1913 page 12)

**Stewart Francis CLARKE**

- 0- Stewart Francis CLARKE** born 16 November 1920 Christchurch New Zealand died 1994 New Zealand married Fiona (CLARKE)  
#Stewart Francis CLARKE 32 Heretaunga Square Heretaunga foreman & Fiona CLARKE 32 Heretaunga Square Heretaunga married 1954 & 1957 Heretaunga Electoral Roll  
#Assistant Yardman Silverstream – We have a vacancy at our glazed earthenware pipe works at Silverstream for an assistant to our yardman. Good Wages and regular overtime. Apply Mr S Clarke Upper Hutt 7149 after hours Upper Hutt 5040 Amalgamated Brick & Pipe Co (Wgtn) Ltd Kiln Street Silverstream reference Upper Hutt City Library Heritage collection Recollect website Upper Hutt Leader 06 July 1961  
#Workmen Upper Hutt Silverstream – Why not earn good wages plus bonus working in our pipe production team? Apply Mr Clarke phone 7149 Upper Hutt Kiln Street Silverstream

Amalgamated Brick & Pipe Co (Wgtn) Ltd reference Upper Hutt City Library Heritage collection Recollect website Upper Hutt Leader 18 April 1963

#Stewart Francis CLARKE 32 Heretaunga Square Heretaunga works manager (projects Officer 1969) & Fiona CLARKE 32 The Square Heretaunga married 1960 & 1963 & 1966 & 1969 Heretaunga Electoral Roll

#Stewart Francis CLARKE 32 Heretaunga Square Heretaunga engineer & Fiona CLARKE 32 The Square Heretaunga housewife 1972 Heretaunga Electoral Roll

#Stewart Francis CLARKE died 1994 New Zealand reference RGO NZ death registration 1994 folio website 1994/57467 born 16 November 1920

---

### Thomas Andrew CLEAR

- 0- Thomas Andrew CLEAR** born 1871 Timor Victoria Australia died 1951 Northcote Darebin City Victoria Australia married 1896 Victoria Australia Margaret STALKER born died Australia  
#Thomas Andrew CLEAR 83 Adelaide Road brick-maker & Margaret CLEAR 83 Adelaide Road married 1905-1906 & 1908 Wellington East Electoral Roll  
#Thomas Andrew CLEAR Silverstream manager brickworks & Margaret CLEAR Silverstream married 1911 Hutt Electoral Roll  
#The employees of the Silverstream Brick and Tile Co Ltd last evening presented Mr T A Clear (their manager) with a silver tea-pot upon which was inscribed the name of Mr and Mrs Clear and a wish that they may enjoy health and happiness in Australia for which they depart very shortly reference Papers past website Evening Post newspaper 26 April 1912 page 7

---

### James HARROP

- 0- James HARROP** born 1850 died 1916 Upper Hutt New Zealand married Martha HARROP born 1853 died 1919 New Zealand  
#James HARROP Silverstream brick-maker & Martha HARROP Silverstream married 1905-1906 Hutt Electoral Roll  
#Wanted General Servant. Apply Mrs James Harrop care of Silverstream Brick and Tile Company. Fare paid reference Papers past website Evening Post newspaper 16 February 1909 page 1  
#On the occasion of severing his connection with the Silverstream Brick and Tile Company on account of illness Mr James Harrop (who has been connected with the firm since its inception) was presented by the employees with a handsome timepiece suitable inscription as a mark of esteem reference Papers past website New Zealand Times newspaper 25 August 1913 pg 3  
#James HARROP died 1916 Upper Hutt New Zealand age 66 born about 1850 (buried St John's church Trentham Upper Hutt)  
#Martha HARROP died 1919 Upper Hutt New Zealand age born about 1853 (buried St John's church Trentham Upper Hutt)  
#Sacred to the memory of James and Martha HARROP At Rest headstone St John's churchyard Trentham Upper Hutt New Zealand

---

### Thomas Raymond JONES

- 0- Thomas Raymond JONES** born 1845 Newport Monmouthshire Wales died August 1918 Lower Hutt New Zealand married 1873 New Zealand Margaret WAUGH  
#Thomas Raymond JONES married 1873 New Zealand Margaret WAUGH reference RGO NZ marriage registration 1873 folio website 1873/9727  
#Notice of Dissolution of Partnership – The Partnership hitherto existing between William Alfred Chote, Charles Pallister, Thomas Raymond Jones and John Wright trading as the Silverstream Brick and Tile Company has been Dissolved as from the 11<sup>th</sup> July 1913 and the business will in future be carried on by Thomas Raymond Jones the elder, John Wright and

Thomas Raymond Jones the younger under the same style as before reference Papers past website Evening Post newspaper 11 July 1913 page 12

#Thomas Raymond JONES Huia Street Hutt contractor & Helen Mary JONES Huia Street Hutt spinster & Ida Margaret JONES Huia Street Hutt spinster 1914 Hutt Electoral Roll

#Contracting and general building firm of Palliser and Jones reference Papers past website Dominion newspaper 21 August 1918 page 6

#Thomas Raymond JONES died 1918 New Zealand reference RGO NZ death registration 1918 folio website 1918/302 age 73 born about 1845

---

### Charles PALLISER

**0- Charles PALLISER** born 04 June 1846 Northallerton Yorkshire England died August 1916 Wellington New Zealand

#Charles PALLISER 38 Ellice Street contractor & Fanny PALLISER 38 Ellice Street married 1914 Wellington East Electoral Roll

#Contracting and general building firm of Palliser and Jones reference Papers past website Dominion newspaper 21 August 1918 page 6

#Charles PALLISER died 1916 New Zealand reference RGO NZ death registration 1916 folio website 1916/8933 age 70 born about 1846

#Notice of Dissolution of Partnership – The Partnership hitherto existing between William Alfred Chote, Charles Pallister, Thomas Raymond Jones and John Wright trading as the Silverstream Brick and Tile Company has been Dissolved as from the 11<sup>th</sup> July 1913 and the business will in future be carried on by Thomas Raymond Jones the elder, John Wright and Thomas Raymond Jones the younger under the same style as before reference Papers past website Evening Post newspaper 11 July 1913 page 12

---

### Frank TONKS

**0- Frank TONKS** born 02 November 1867 Lawrence New Zealand died 21 March 1941 New Plymouth New Zealand marriage 03 December 1887 New Zealand **Isabella Louisa SHENNEN** born 04 September 1865 Wellington New Zealand died December 1944 New Zealand

#Notice – It is hereby notified that Mr Frank Tonks has this day retired from the Partnership heretofore carried on by the undersigned under the name of Silverstream Brick and Tile Company. Dated at Wellington this 19<sup>th</sup> day of December 1901. W A Chote – Frank Tonks - John Wright – Witness J P Campbell Solicitor Wellington reference Papers past website New Zealand Times newspaper 20 December 1901 page 6

#Frank TONKS 49 Webb Street brick-maker & Isabella TONKS 49 Webb Street married & Enoch TONKS Webb Street brick-maker 1905-1906 Wellington Central Electoral Roll

#Deaths – TONKS On 21 March 1941 at New Plymouth Hospital Frank third son of the late Enoch and Susan Tonks age 73 years reference Papers past website Evening Post newspaper 25 March 1941 page 1

---

### John WRIGHT

**0- John WRIGHT** born details unknown (too many with same name)

#Notice – It is hereby notified that Mr Frank Tonks has this day retired from the Partnership heretofore carried on by the undersigned under the name of Silverstream Brick and Tile Company. Dated at Wellington this 19<sup>th</sup> day of December 1901. W A Chote – Frank Tonks - John Wright – Witness J P Campbell Solicitor Wellington reference Papers past website New Zealand Times newspaper 20 December 1901 page 6)

#Mr J Wright of the Silverstream Brick and Tiles Company is laid up with an attack of internal inflammation reference Papers past website Hutt Valley Independent 26 August 1911 page 2

Perhaps #John WRIGHT 69 Tasman Street timber merchant 1911 Wellington East Elect Roll  
Perhaps #John WRIGHT Martin Street Upper Hutt clerk 1911 Hutt Electoral Roll  
#Notice of Dissolution of Partnership – The Partnership hitherto existing between William Alfred Chote, Charles Pallister, Thomas Raymond Jones and John Wright trading as the Silverstream Brick and Tile Company has been Dissolved as from the 11<sup>th</sup> July 1913 and the business will in future be carried on by Thomas Raymond Jones the elder, John Wright and Thomas Raymond Jones the younger under the same style as before reference Papers past website Evening Post newspaper 11 July 1913 page 12)  
Perhaps #John WRIGHT Martin Street Upper Hutt clerk 1914 Hutt Electoral Roll  
Perhaps #John WRIGHT Melbourne Road Island Bay clerk 1914 Wellington Suburbs and Country Electoral Roll  
#Mr John Wright secretary of the Wellington Brick-makers Association and captain of Wellington Fire Police who underwent an operation in Dunedin recently is making a satisfactory recovery. He has left Dr Barnett's private hospital and is now at the home of his sister at Musselburgh reference Papers past website Evening Post newspaper 28 April 1917 page 6  
#He also trusted that Mr John Wright captain of the police would soon be restored to health reference Papers past website Dominion 16 October 1918 page 7

## MISCELLANEOUS INFORMATION

### Archives New Zealand Wellington

- ORDER (Reference Archives NZ Wellington R20465055 The Silverstream Brick and Tile Company Ltd date unknown box 221 former archives CO-WW3445 alternative record 1919/33 open access)
- ORDER (Reference Archives NZ Wellington R10463280 Private Siding Silverstream Brick and Tile Company date 1901-1941 box 15 former archives R-W1 Record number 01/460 open access)
- ORDER (Reference Archives NZ Wellington R10734943 Private Siding Silverstream Brick and Tile Company date 1901-1941 box 97 part number 1 former archives R3W2381 Record number 1916/2477 open access)

### **Silverstream Brick and Tile Company Photographs**

#### Alexander Turnbull Library [TAPUHI] & Digital NZ website

- Circa 1905 View of brick works Silverstream Wellington Region New Zealand [postcard photographer Albert Percy Godber]
- Circa 1905 Stacks of clay drain pipes at brick works Silverstream Wellington Region New Zealand [photographer Albert Percy Godber]
- Circa 1922 Steam digger at the Silverstream Brick and Tile Company Upper Hutt Wellington [includes a horse photographer A P Godber]
- 1922 Steam digger at the brickworks of the Silverstream Brick & Tile Company [Godber]
- Circa 1924 Truck with the firs pipes leaded from the Silverstream Brick and Tile Company Upper Hutt
- 1930 Interior view of the brickworks of the Silverstream Brick & Tile Company [kiln]
- 1930 Exterior view of the brickworks of the Silverstream Brick & Tile Company
- 1930 Silverstream Brick & Tile Company factory
- 1930 View of the flying fox at the brickworks of the Silverstream Brick & Tile Company
- 1930 View from above of the flying fox at the brickworks of the Silverstream Brick & Tile Company

Wairarapa Archives & Digital NZ website

Title = Brick in debris pile, Featherston Camp site digital image

Description = shows a brick was made by the Silverstream Brick Company in a pile of mainly-concrete debris on the site of the Featherston Military Camp. It is not known whether the origin is World War One or Two.

---