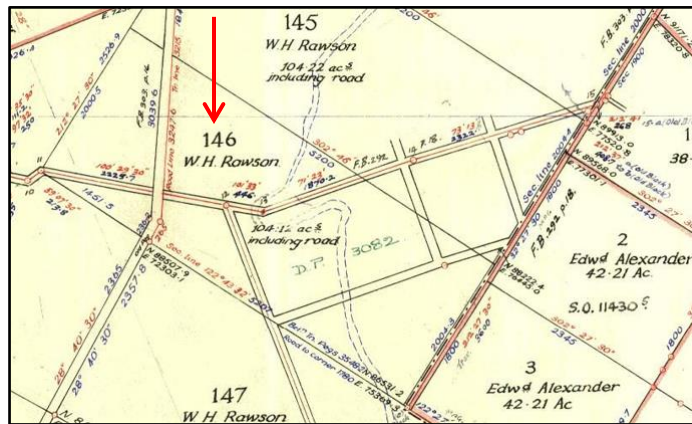


WALLACEVILLE (WALLACE) SCHOOL
Whiteman's Valley Road Mangaroa Valley Upper Hutt
Opened 1881 - Closed 1938

<i>Time line</i>	<i>Wallaceville (Wallace) School</i>
1881	Wallace School opened circa May 1881
1881	Edward FODEN foundation principal
1881	22 foundation pupils
1938	perhaps School closed 06 May 1938

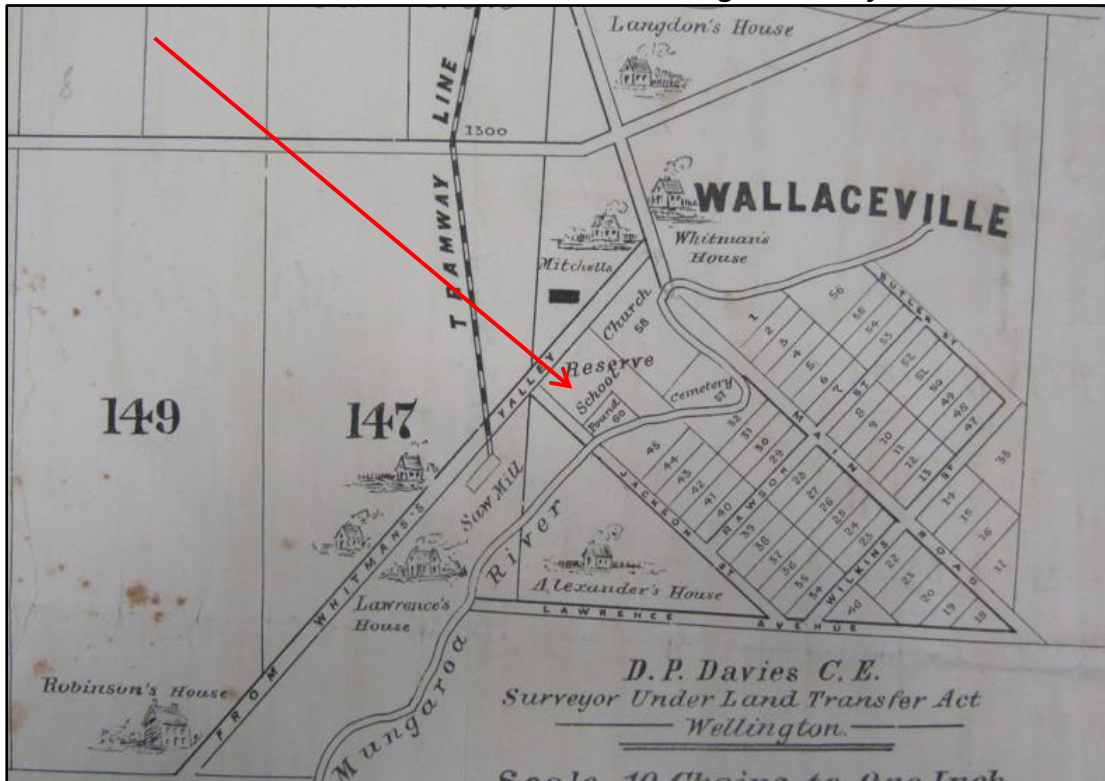
The Wallaceville School was built on part Section No 146 survey district Upper Mungaroa block in Whiteman's Valley (later Rimutaka Land District). The Crown Grant was issued to W H Rawson.

Section No 146



(Reference 1860s Sections UH Map Whiteman's Valley JGillard WNC_SO_10985_I_3.jpg)

1878 Wallaceville Estate Mungaroa Valley



(Reference UH Estate 1878 Wallaceville Mungaroa Valley IMG_4265.JPG)

The 1868 and 1878 Wallaceville Estate development plans recorded a section of land for a school but it would be many years before the school was established.

New Zealand Times newspaper 27 October 1881

Board of Education – The Building Committee report was brought up and the following recommendations for grants of money to effect necessary repairs and improvements and to erect new additions to school buildings were adopted – Wallaceville School £150, Whiteman’s Valley school £150 (other details not transcribed)

(Reference Papers past website New Zealand Times newspaper 27 October 1881 page 3)

The Wallaceville School we believe was opened around May 1881. The Wallace (Wallaceville) School register dated January 1881 recorded against 22 pupils names “Time since admission 8 months”. This would leave one to believe that the school was opened 8 months earlier around May 1881.

(Reference UH City Library Heritage collection Location: 11a Wallaceville School Attendance Registers January 1882 – December 1925 & Examination Registers 1933 – 1937)

Evening Post 21-28 November 1881 & New Zealand Times 22-29 November 1881

To Builders – The Education Board of Wellington invite tenders until noon of Tuesday the 29th instant for the erection of a teachers cottage Opaki, schoolhouses at Tauern, Whiteman’s Valley and Wallaceville additions and alterations to the Taita School and also for school furniture. Plans and specifications at my office for Opaki cottage and Taueru School at the office of the Wairarapa Daily Masterton for Whiteman’s Valley School at Mr Haybittle’s Store Upper Hutt and for the Wallaceville School at the present school house Wallaceville – Thomas Turnbull Architect to the Board

(Reference Papers past website Evening Post 21-28 November 1881 & New Zealand Times 22-29 November 1881 & Wairarapa Daily Times 28 November 1881)

Comment: Edward FODEN was recorded in 1882 as the teacher of Wallaceville School also recorded as Wallace School. We believe that Wallaceville School was opened around May 1881. The Wallace (Wallaceville) School register dated January 1881 recorded against 22 pupils names “Time since admission 8 months”. This would calculate to the school being opened 8 months earlier around May 1881.

(Reference UH City Library Heritage collection Location: 11a = Wallaceville School Attendance Registers January 1882 – December 1925 & Examination Registers 1933 – 1937)

January to 29 September 1882 teacher Edward FODEN Wallace School Attendance Register

(Reference Upper Hutt City Library Heritage collection recollect website)

New Zealand Public School Register of Daily Attendance issued by authority under The Education Act 1877 Section 100 – This register is the Property of the Committee of the School District in which it is issued.

Wallace Public School - (blank) Class – Edward FODEN Teacher

Register of Attendance from January 1882 to 29 September 1882 (for Instructions see last page of Cover – By Authority George Didsbury Government Printer Wellington.

NOTE – the register recorded against 22 pupils names “Time since admission 8 months”. This would leave one to believe that the school was opened 8 months earlier around April

GIRLS

Name	Age	remarks
Lee Annie	12/10	Time since admission 8 months
Lee Clara	5/8	Time since admission 8 months
Downing Mabel	5/8	Time since admission 8 months
Burrell Mary	12/2	Time since admission 8 months
Burrell Felicia	5/7	Time since admission 8 months
Hughes Preston	8/2	Time since admission 8 months
Mitchell Ellen	5/8	Time since admission 8 months
Burrell Edith	5/6	Time since admission 8 months
Langdon Jane	10/5	Time since admission 8 months

Langdon Rose	6/9	Time since admission 8 months
Robinson Sarah	6/8	Time since admission 8 months
Robinson Mary	5/6	Time since admission 8 months
Linsell Minnie	5/6	Time since admission 8 months
Cooley Ethel	5/8	Time since admission 8 months
Smith Mary	10/8	Time since admission 6 months
Smith Alice	12/8	Time since admission 6 months
Scrimshaw Maggie	10/3	Time since admission 3 months
Scrimshaw Lucy	7/3	Time since admission 3 months
Scrimshaw Elizabeth	5/3	Time since admission 2 months
Smith Matilda	5/0	Time since admission 0 months

BOYS

Burrell Alfred	14/4	Time since admission 8 months
Burrell Joseph	10/2	Time since admission 8 months
Burrell W A	7/10	Time since admission 8 months
Burrell George	6/8	Time since admission 8 months
Burrell Ernest	8/8	Time since admission 8 months
Burrell Walter	10/8	Time since admission 8 months
Fairy James	11/5	Time since admission 8 months
Cooley Isaac	7/8	Time since admission 8 months
Smith Thomas	7/3	Time since admission 6 months
Whiteman John	5/3	Time since admission 4 months
Wordmass Fredk	9/0	Blank
Lee Henry	Blank	Blank
Langdon G A	Blank	Blank

(Reference UH City Library Heritage collection Location: 11a = Wallaceville School Attendance Registers January 1882 – December 1925 & Examination Registers 1933 – 1937)

New Zealand Times newspaper 18-24 September 1883

Education Board Wellington 15th September 1883 – The Board requires a First Assistant Master for the Newtown Schools salary £230 per annum. Master for Kaitoke School salary £100 per annum and house. Master for Wallaceville School salary £100 and house. Applications stating experience and classification must be sent in not later than Monday the 24th instant. Arthur Dorset Secretary.

(Reference Papers past website New Zealand Times newspaper 18-24 September 1883 page 3)

New Zealand Mail newspaper 29 September 1883

Education Board – Resignations and Appointments – Appointments of teachers were made thus – Mr Manning promoted from Thorndon to be first assistant at Newtown School, Mr Jenkins promoted from Thorndon to be master of Kaitoke School, Mr M Trimble (new appointment) to be master of Wallaceville School, Mr L W Deakin to be pupil teacher at Mount Cook school.

(Reference Paper past website New Zealand Mail newspaper 29 September 1883 page 22)

New Zealand Times 13-15 May 1885 & Wairarapa Daily Times 14-20 May 1885

Education – Applications stating qualifications and experiences will be received up to 23rd instant for the following appointments – Master Wallaceville School salary £140 and two rooms (plus other details not transcribed) A Dorset Secretary Education Office Wellington 12th May 1885

(Reference Paper past website New Zealand Times 13 May 1885 page 3 & Wairarapa Daily Times 14-20 May 1885)

Evening Post newspaper 03 March 1886

For Sale or to Let a Farm of 52 acres divided into 6 paddocks with orchard, 4 roomed house, cowshed, dairy and other outbuildings either with or without stock situated within quarter mile of Wallaceville School land transfer title. Apply to R Lee Wallaceville Upper Hutt

(Reference Papers past website Evening Post newspaper 03 March 1886 page 3)

01st July to 18th December 1885 teacher L A Treadwell Wallaceville School Attendance Register

(Reference Upper Hutt City Library Heritage collection recollect website)

New Zealand Mail newspaper 28 May & 02 July 1886

Education Board – The resignation of Miss Treadwell of the Wallaceville School was received and accepted.

(Reference Papers past website New Zealand Mail newspaper 28 May 1886 page 29)

New Zealand Mail newspaper 28 May & 02 July 1886

Education Board – Mrs Grady's resignation of her position as assistant mistress at the Willis Street School was accepted and Miss Treadwell of the Wallaceville School was allowed to withdraw her resignation.

(Reference Papers past website New Zealand Mail newspaper 28 May 1886 page 29)

Evening Post newspaper 04 April 1888

Mr William Mursell who has been appointed by the Education Board to the mastership of the Dreyerton School has entered upon his duties. Mr Edward Foden has been selected by the Board for appointment to the Wallaceville School and as the settlers in the district had previously petitioned in his favour it is assumed that the confirmation of his appointment by the local committee is merely a matter of favour.

(Reference Paper past website Evening Post newspaper 04 April 1888 page 2)

New Zealand Mail newspaper 24 May 1889

Upper Hutt School – As a result of the visit of the chairman, architect and secretary of the Education Board to the Upper Hutt last week it has been decided to call for tenders immediately for painting the school buildings covering the master's residence with iron and papering some of the rooms which in consequence of damage done by the recent rains are in need of such repairs. The visitors had proposed to visit the Wallaceville School also but were prevented by the unfavourable weather from doing so.

(Reference Papers past website New Zealand Mail newspaper 24 May 1889 page 30)

New Zealand Times newspaper 27 June 1889

Education Board – The Board then went into committee to consider tenders for the following works the lowest being accepted in each case. Painting the Ohariu School, erecting of a shelter shed for the Clyde-quay School, covering the roof of the Wallaceville School, repairs to the school building at Mungaroa and additions to the Parkvale School.

(Reference Papers past website New Zealand Times newspaper 27 June 1889 page 6)

Evening Post newspaper 19 July 1892

For Sale cheap two Hacks will go in harness and carry a lady. R Lee near Wallaceville School Mungaroa Valley.

(Reference Papers past website Evening Post newspaper 19 July 1892 page 3)

New Zealand Times newspaper 29 May 1893

Mr T Fleming Education Board school inspector will make the following visits this week Paraparaumu and Paikakariki Monday and Tuesday, Vogeltown Thursday and Friday, Ohariu and Makara next week. Mr Lee will inspect the Wallaceville School today

(Reference Papers past website New Zealand Times newspaper 29 May 1893 page 2)

Evening Post newspaper 20 May 1895

For Sale a Farm of 52 acres of good land near Wallaceville School with orchard, seven roomed house, dairy, cowshed, hay-shed, stable, workshop &c., M Lee near Wallaceville School Mungaroa Valley Upper Hutt.

(Reference Papers past website Evening Post newspaper 20 May 1895 page 3)

Evening Post newspaper 30 October 1896

Otaki Electorate – Dr Newman will address the Electors – Mungaroa in the Wallaceville School Tuesday 03rd November at 8 pm (plus other details not transcribed)

(Reference Papers past website Evening Post newspaper 30 October 1896 page 6)

Evening Post newspaper 06 November 1896

Mr H A Field addressed as crowded meeting of Mungaroa electors at the Wallaceville School last evening.

(Reference Papers past website Evening Post newspaper 06 November 1896 page 6)

Evening Post newspaper 25 November 1896

Board of Education – The Board's carpenter was directed to make some small additions to the Wallaceville School.

(Reference Papers past website Evening Post newspaper 25 November 1896 page 5)

Evening Post newspaper 25 November 1896

Education Board – It was decided to allow tenders to be called for painting the Kaiwairua school residence, for painting and adding to the Wallaceville School, painting the Featherston School buildings and inside of the Wainuiomata School.

(Reference Papers past website Evening Post newspaper 25 November 1896 page 1)

[1897] Wallaceville Public School is located at the head of the Mungaroa Valley. It is a wooden building of the usual design having one room and a vestibule in addition to two rooms for the teacher's residence. This school has been established for over fourteen years there are thirty children on the roll divided between the whole of the standards the average attendance being twenty five.

(Reference NZETC website 1897 The Cyclopaedia of New Zealand Upper Hutt and Surrounding Districts page 844)

January to June 1897 teacher S Elkin Wallaceville School Attendance Register

(Reference Upper Hutt City Library Heritage collection recollect website)

[1897] Miss Sarah Elkin who was charge of the Wallaceville School is a native of Ireland which she left at an early age with her parents on their emigration to Australia. Miss Elkin commenced her education in Australia continuing her studies in Taranaki whither her parents had removed. In 1880 she became teacher her first school being at Koru, Taranaki. After two years she entered the Wellington Training College and remained till 1885 then obtaining her first certificate which has since been increased to E1. Miss Elkin was mistress of the Koro Koro School near Petone for four years and received her present appointment in 1889.

(Reference NZETC website 1897 The Cyclopaedia of New Zealand Upper Hutt and Surrounding Districts page 844)

July to December 1899 teacher S Elkin Wallaceville School Attendance Register

(Reference Upper Hutt City Library Heritage collection recollect website)

January to June 1900 teacher S Elkin Wallaceville School Attendance Register

(Reference Upper Hutt City Library Heritage collection recollect website)

Evening Post newspaper 28 September 1901

The teachers relieving staff of the Education Board has received the following instructions – Miss Holm will relieve Miss Elkin for a month at the Wallaceville School, Miss Black is to assist Miss Hall at the Scarborough School for a month and Miss Toohill is to relieve for a month at the Thorndon School.

(Reference Papers past website Evening Post newspaper 28 September 1901 page 4)

New Zealand Times newspaper 30 September 1901 & New Zealand Mail 02 October 1901

The following instructions have been issued to the relieving staff of the Education Board – Miss Holm will relieve Miss Elkin for a month at the Wallaceville School, Miss Black is to assist Miss Hall at the Scarborough School for a month and Miss Roohill is to relieve for a month at the Thorndon School.

(Reference Papers past website New Zealand Times 30 September 1901 & New Zealand Mail 02 October 1901)

Evening Post newspaper 08-10 October 1901 & New Zealand Times 09-11 October 1901

Education Board Office Wellington 08th October 1901 Application which must be made on forms to be obtained at this Office will be received up to Monday 21st instant for the following positions. Sole teacher Wallaceville School average attendance 31 for half year ended 30th June Salary 110 to 145 according to classification and residence (other school not transcribed)

(Reference Papers past website Evening Post newspaper 08 October 1901 & New Zealand Times 09-11 October 1901)

New Zealand Times newspaper 12 December 1901

Education Board – On the recommendation of the committee Miss Aldridge of Kereru was appointed teacher of the Wallaceville School.

(Reference Papers past website New Zealand Times newspaper 12 December 1901 page 2)

Manawatu Times newspaper 14 December 1901

Miss Aldridge who was in charge of the Kereru School has been appointed to the Wallaceville School. Her departure from Kereru will be regretted generally.

(Reference Papers past website Manawatu Times newspaper 14 December 1901 page 2)

Evening Post newspaper 20-21 November 1902

Hutt Elections – Mr F Pirani will address the electors at Mungaroa Valley Wallaceville School Monday 24th November 2 pm (other places not transcribed)

(Reference Papers past website Evening Post newspaper 20-21 November 1902 page 6)

Evening Post newspaper 22 November 1902

Mr Pirani will speak at Wallaceville School at 2 pm on Monday at the Summit at 7 pm and at Kaitoke at 8.30 pm.

(Reference Papers past website Evening Post newspaper 22 November 1902 page 6)

01 July 1903 to – 31 December 1905 teacher A Duncan Wallaceville School Attendance Register

(Reference Upper Hutt City Library Heritage collection recollect website)

January to June 1904 teacher B C Aldricle [sic] Wallaceville School Attendance Register

(Reference Upper Hutt City Library Heritage collection recollect website)

Evening Post newspaper 24 February 1905

Miss Duncan (Gladstone) has been appointed as teacher at the Wallaceville School (at the request of the latter committee) Miss Cran (Balance) at the Martin borough School and Miss McGowan (Judgeford) as assistant at the Newtown School

(Reference Papers past website Evening Post newspaper 24 February 1905 page 5)

Wallaceville School circa 1910



(Reference Upper Hutt City Library Heritage collection Upper Hutt School collection UHSO21-003)

Evening Post newspaper 13 August 1908

Miss Bright a teacher at Wallaceville has written a book of New Zealand fairy tales. English reviews are favourable and Miss Bright intends next to publish a novel depicting New Zealand life and scenes.

(Reference Papers past website Evening Post newspaper 13 August 1908 page 9)

January to December 1910 teacher A Bright Wallaceville School Attendance Register

(Reference Upper Hutt City Library Heritage collection recollect website)

Wallaceville School circa 1910



(Reference Upper Hutt City Library Heritage collection Upper Hutt School collection UHSO21-004)

January to June 1912 teacher F Thomson Wallaceville School Attendance Register

(Reference Upper Hutt City Library Heritage collection recollect website)

Hutt Valley Independent newspaper 21 September 1912

Tenders – Price wanted for 1¾ chains picket fence Wallaceville School. Tenders close 01 October Specifications at F A Clifford's.

(Reference Papers past website Hutt Valley Independent newspaper 21 September 1912 page 1)

Hutt Valley Independent newspaper 21 September 1912

Tenders are invited for erecting a picket fence at Wallaceville School

(Reference Papers past website Hutt Valley Independent newspaper 21 September 1912 page 2)

Hutt Valley Independent newspaper 04 January 1913

Miss Johnson of the Akatarawa School takes charge of the Wallaceville School after the holidays

(Reference Papers past website Hutt Valley Independent newspaper 04 January 1913 page 2)

Hutt Valley Independent newspaper 15-22 March 1913

Wallaceville – Teacher – Miss Florence Thomson

Thomas EDWARDS was also unsuccessful last election. He has opposed all proposals submitted to polls of ratepayers for the advancement of the township. We admit he favoured a

water-supply but it was from a creek half-way between Wallaceville School and Whiteman's Valley.

(Reference Papers past website Hutt Valley Independent newspaper 15-22 March 1913 page 3)

January to December 1914 teacher E M Johnson Wallaceville School Attendance Register

(Reference Upper Hutt City Library Heritage collection recollect website)

New Zealand Times newspaper 07 December 1915

Military Hospital Guild – The following gifts have been received by the guild – Wallaceville school children 11 face washers, 3 bandages, 2 pairs mittens (plus other school not transcribed)

(Reference Papers past website New Zealand Times newspaper 07 December 1915 page 9)

Dominion newspaper 24 May 1916 & New Zealand Times 30 May 1916

The following contributions to the Countess of Liverpool Fund have been received at the Town Hall during the past week – Wallaceville School 2 pairs socks

(Reference Papers past website Dominion newspaper 24 May 1916 page 2 & New Zealand Times 30 May 1916)

Evening Post newspaper 22 January 1917

Camp to Camp Featherston to Trentham the Twenty Seconds Second day out – We halted at the Wallaceville School and here our dispositions were made for the night.

(Reference Papers past website Evening Post newspaper 22 January 1917 page 3)

New Zealand Times newspaper 06 March 1917

Red Cross Gifts – The following have sent gifts to the Red Cross depot Mercer Street during the past week – E M Johnson Wallaceville school Mrs W S Reid, Miss Metz Ohau branch British Red Cross (plus many others)

(Reference Papers past website New Zealand Times newspaper 06 March 1917 page 8)

Dominion newspaper 08 February 1918

The St Johns Ambulance Brigade Red Cross Society Star boating sheds Jervious Quay acknowledge with thanks donations of money and hospital equipment from the following – Wallaceville School per Miss Johnson.

(Reference Papers past website Dominion newspaper 08 February 1918 page 3)

New Zealand Times newspaper 18 September 1919

In the House of Representatives Mr T M Wilford (Hutt) asked the Minister for Education whether he was aware that for some weeks there had been no teacher in the Wallaceville school and whether he would take steps to see that one was immediately provided? Mr Massey replied The provision of teachers for schools is the duty and the responsibility of the Education Board of the district and the Minister has no right to interfere. In the case of the Wallaceville school which the department is informed was closed for a fortnight after the usual spring vacation a teacher has now been provided and commenced duties on 08th September.

(Reference Papers past website New Zealand Times newspaper 18 September 1919)

Evening Post newspaper 18 September 1919

Answering a question by Mr T M Wilford regarding Wallaceville School the Prime Minister said yesterday that the provision of teachers for school was the duty and the responsibility of the Education Board of the district and the Minister had no right to interfere. In the case of the Wallaceville School which the Department was informed was closed for a fortnight after the usual spring vacation a teacher had now been provided and commenced duties on 08th September.

(Reference Paper past website Evening Post newspaper 18 September 1919 page 6)

04th February to December 1919 teacher Edith M Johnson Wallaceville School Attendance Register

(Reference Upper Hutt City Library Heritage collection recollect website)

New Zealand Times newspaper 10 February 1921

Roll of Honour interesting ceremony at Wallaceville School - A roll of honour in memory of those who went from the Wallaceville district to take part in the Great War was unveiled at the school on Saturday afternoon. The school was beautifully decorated by the ladies for the occasion and

accordingly the weather being of the best presented an animated appearance there being close on 150 people present. An interesting and unique feature was the attendance of over 30 soldier patients from Trentham camp. Frederick Clifford occupied the chair and was supported by Mr W H Field MP and Mr Rishworth both members of the Education Board and by Dr Kemp Upper Hutt and the members of the school committee. The chairman introduced the proceedings and stated that the roll contained the names of thirty one boys who had gone from the district nine of whom had made the supreme sacrifice while twenty two had returned. He also paid a tribute to the work done by the ladies in sending parcels for the use of the troops. The roll was unveiled by Mrs Kemp Upper Hutt who was afterwards presented with a bouquet by Miss E Scholes. Mr Field MP in the course of his speech drew attention to the dangers which the Allies had passed through in March 1918 and contrasted the comparatively happy conditions prevailing in New Zealand today with the sufferings being experienced in some parts of Europe as the result of the war. He also emphasised the necessity of making Germany pay to the utmost of her resources the compensation demanded. Mr Rishworth who followed assured the audience that Germany was by no means a broken country. He dwelt on the value of such rolls of honour in keeping green the memory of those who went in defence of their land drew attention to the intense patriotism both in the Homeland and New Zealand by the backbone of the country the yeoman class. Dr Kemp added his testimony from personal experience to the heroism displayed by the New Zealand soldiers especially during that trying time in March 1918 and warned his hearers against believing Germany to be a repentant country. The company then proceeded outside to the school grounds where the National Anthem was sung. In memory of the fallen the flag was lowered to the strains of the Last Post. An adjournment was thereafter made to Wallaceville Hall where refreshments were provided by the ladies and so a most successful function was brought to a close.

(Reference Papers past website New Zealand Times newspaper 10 February 1921 page 9)

The Wallaceville School World War One Roll of Honour is now situated on the wall of the first schoolhouse at Mangaroa School in Flux Road Mangaroa Valley.

01 February to 30 December 1921 teacher J W C Brodie Wallaceville School Attendance Register

(Reference Upper Hutt City Library Heritage collection recollect website)

January to December 1922 teacher Ellen M Engstrom Wallaceville School Attendance Register

(Reference Upper Hutt City Library Heritage collection recollect website)

05th February 1924 to 19th December 1924 teacher O J Scholes Wallaceville School Attendance Register

(Reference Upper Hutt City Library Heritage collection recollect website)

15th April 1925 to December 1925 teacher D M Saunders Wallaceville School Attendance Register

(Reference Upper Hutt City Library Heritage collection recollect website)

Manawatu Herald newspaper 14 July 1927

Mr J Downing of Wallaceville has completed 42 years as a member of the Wallaceville School committee.

(Reference Papers past website Manawatu Herald newspaper 14 July 1927 page 2)

Timaru Herald newspaper 15 July 1927 page 7

Forty-four Years' Service - What is believed to be a record for New Zealand so far as honorary public service is concerned is held by Mr J. Downing of Wallaceville who has been a school committeeman for forty-four years. Reference to the long service rendered by Mr Downing and others was made in the annual report of the Wellington Education Board last week which stated that a recent return of long service on school committees disclosed a body of honorary public service which would be difficult to surpass. Over 182 members past or present had served over ten years on school committees. Mr Downing left England in the ship Hudson on 20 October

1875 and arrived in New Zealand on 24 January 1876 shortly afterwards taking up farming in the Upper Hutt district. He was elected as a member of the Upper Hutt school committee a position he held for two years until he went to reside at Wallaceville. At that time there was no school at Wallaceville although during the period Mr Downing was a member of the Hutt Committee he had worked untiringly in the educational interests of the Wallaceville settlers. About five acres of land having been donated by the executors of 'the estate of the late Mr Rawson, Mr Downing waited upon members of the Wellington Education Board personally with the result that within a very short time, a school was erected in the district, a residence for the schoolmaster being provided by Mr Downing who was elected a member of the new committee. With the exception of a break about four years ago Mr Downing has been a member of the Wallaceville School Committee ever since. His six children three sons and three daughters were all educated at the Wallaceville School.

(Reference Papers past website Timaru Herald newspaper 15 July 1927 page 7)

Evening Post newspaper 03 April 1930



Smiling Young Labourers – Boys of the Wallaceville School who yesterday formed a working bee to help level off the school grounds

(Reference Papers past website Evening Post 03 April 1930 & Manawatu Times 05 April 1930)

01 January 1933 teacher J B Carr Wallaceville School Attendance Register

(Reference Upper Hutt City Library Heritage collection recollect website)

Upper Hutt Weekly Review newspaper 06 May 1938

As a result of the Government's policy of centralization of schools the Whiteman's Valley and Wallaceville Schools have been closed down and the children from these schools are conveyed by bus to Upper Hutt.

(Reference Papers past website Upper Hutt Weekly Review newspaper 06 May 1938 page 5)

WALLACEVILLE SCHOOL - STAFF

<i>Time line</i>	<i>Wallaceville School</i>
1881	Edward Foden teacher 1881
1883	Mr Montfort Trimble teacher 1883-1883
1885	Mr John Downing School committee member (42 years) 1885-1927
1885	Miss Laura Augustus Treadwell teacher 1885-1886
1886	Mrs Hansen 1886-1887
1888	Mr Edward Foden teacher 1888
1897	Miss Sarah Elkin 1897-1901
1901	Miss May Emma Holm 1901-1901
1901	Miss Bertha Christina Aldrich 1901-1904
1905	Miss Annie Duncan 1905-1908
1908	Miss Alice Maud Bright 1908-1910
1910	Miss Florence McLean Thomson 1910-1913
1913	Miss Edith Monica Johnson 1913-1919
1921	John McClure Brodie 1921
1921	Ellen Mabel Engstrom teacher 1921-1922
1924	Mrs Olive Isobel Scholes 1924-1925
1925	Dorothy Margaret Saunders 1925-1925
1932	Mrs Ivy Bell Carr 1932-1937
1938	Wallaceville School closed

A - Z

Bertha Christina ALDRICH teacher 1901 & 1904

[also recorded as Miss ALDRIDGE as well as Miss ALDRICH]

- 0- Bertha Christina ALDRICH born 1873 Dunedin New Zealand died 1953 Wellington New Zealand married 08 February 1905 Upper Hutt New Zealand Arthur James SEED born 1877 Wellington New Zealand died 1966 Wellington New Zealand
- #Bertha Christina Aldrich born 1873 Dunedin New Zealand reference RGO NZ birth registration 1873 folio website 1873/42563 parents Matilda Annie and George Mingay [sic] Aldrich
- #Bertha Christina Aldrich residence year 1893 place Otago publication date 27 February 1893 reference NZ Teachers and Civil Examinations reference New Zealand Gazette No 14 page 278
- #Bertha Christina Aldrich Trentham Upper Hutt teacher residential & Christine Susanna Aldrich Trentham Upper Hutt married women & George Mungay Aldrich Trentham settler residential 1900 Otaki Electoral Roll
- #Bertha Christina Aldrich Trentham Upper Hutt teacher 1900 Hutt Electoral Roll
- #Miss Aldrich at present assistant at the Upper Hutt School will take charge at Kereru will be filled by Miss M Cooper at present at the Petone School reference Evening Post newspaper 12 April 1901 page 5
- #The scholars of the Upper Hutt School made presentation to Miss Aldrich on the eve of her departure last week reference Papers past website Evening Post newspaper 08 May 1901 page 4
- #A very successful concert and dance was held at the Kereru Schoolhouse last night. Miss Aldrich the new teacher was the moving spirit. Owing to her tact and energy the school attendance has increased considerably of late reference Evening Post 05 August 1901 pg 5
- #Education Board - The Wallaceville Committee wrote recommending the appointment of a new teacher at the school there. The Board appointed Miss Aldridge to the position and then went into committee reference Papers past website Evening Post 12 December 1901 page 4

- #Education Board – On the recommendation of the committee Miss Aldridge of Kereru was appointed teacher of the Wallaceville School reference Papers past website New Zealand Times newspaper 12 December 1901 page 2 & New Zealand Main 18 December 1901 pg 45
- #Miss Aldridge who was in charge of the Kereru School has been appointed to the Wallaceville School. Her departure from Kereru will be regretted generally reference Papers past website Manawatu Times newspaper 14 December 1901 page 2
- #[a] 27 January 1902 to June 1902 Teacher B C ALDRICK Register of Daily Attendance – UHCC Library Heritage collection Location 11a
- #[a] July 1902 to December 1902 Teacher B C ALDRICK Register of Daily Attendance – UHCC Library Heritage collection Location 11a
- #[a] July 1903 to December 1903 Teacher B C ALDRICK Register of Daily Attendance – UHCC Library Heritage collection Location 11a
- #Bertha Christina Aldrich Trentham Upper Hutt teacher residential & Christine Susanna Aldrich Trentham Upper Hutt married women & George Mungay Aldrich Trentham settler residential 1903 Hutt Electoral Roll
- #[a] January 1904 to June 1904 Teacher B C ALDRICK Register of Daily Attendance – UHCC Library Heritage collection Location 11a
- #[b] Wallaceville School Attendance Register January – June 1904 – teacher B C Aldrick no reference source on recollect but scanned
- #January to June 1904 teacher B C Aldrickle [sic] Wallaceville School Attendance Register reference Upper Hutt City Library Heritage collection recollect website
- #Bertha Christina Aldrich married 1905 New Zealand Arthur James Seed reference RGO NZ marriage registration 1905 folio website 1905/1693
- #Bertha Christina Aldrich married 1905 New Zealand Arthur James Seed reference RGO NZ marriage registration 1905 folio website 1905/1693
- #Bertha Christina Seed Mungaroa Valley married & Arthur James Seed Mungaroa millowner 1905-1906 & 1908 Hutt Electoral Roll
- #Bertha Christina Seed Mungaroa married & Arthur James Seed Mungaroa mill-owner 1914 Hutt Electoral Roll
- #The St Johns Ambulance Brigade and Red Cross Society Star Boating Shed thank the following for donations and gifts - Mangaroa School (per Mrs A Seed) per Miss Banks (Te Marua) [plus others names and school not transcribed] reference Papers past website Dominion newspaper 16 December 1916 page 4
- #Bertha Christina Seed Mungaroa married & Arthur James Seed Mungaroa mill-owner 1919 Hutt Electoral Roll
- #Bertha Christina Seed Clark Road Khandall married & Arthur James Seed Clark Road Khandallah manager 1922 Wellington Suburbs Electoral Roll
- #The school has its basis in Mrs Bertha Seed's private school, first in a sawmill building in McLaren [Maclaren] Street where it opened with Mr Abraham as teacher on 04 May 1914 reference publication Upper Hutt – The History by J A Kelleher 1991 page 237
- #Bertha Christina Seed died 1953 New Zealand reference RGO NZ death registration 1953 folio website 1953/18636 age 77 born about 1876
- 0-1- Dorothy Mary Aldrich SEED born 1905 New Zealand
#Dorothy Mary Aldrich SEED born 1905 New Zealand reference RGO NZ birth registration 1905 folio website 1905/21076 parents Bertha Christina and Arthur James Seed
- 0-2- Marjorie Bertha SEED born 1907 New Zealand
#Marjorie Bertha SEED born 1907 New Zealand reference RGO NZ birth registration 1907 folio website 1907/25533 parents Bertha Christina and Arthur James Seed
Miss ALDRIDGE teacher but NOT at Wallaceville School
- 0- Miss Olive Emily ALDRIDGE married 1900 New Zealand Henry Tweedy Carver
#Ohingaiti School Picnic Mr Brooks headmaster and Miss Aldridge [sic] pupil teacher were in attendance reference Wanganui Chronicle newspaper 21 March 1899 page 2
#Martha Aldridge Ohingaiti domestic duties residential & John Petty Aldridge Ohingaiti mill manager residential 1900 Rangitikei Electoral Roll
#Olive Emily Aldridge married 1900 New Zealand Henry Tweedy Carver reference RGO NZ marriage registration 1900 folio website 1900/449

#Education Board –On resuming it was reported at the following resignations had been accepted Ohingaiti Miss Aldridge [sic] pupil teacher reference Wanganui Herald newspaper 19 December 1899 page 2

#Comment

Miss Alice Maud BRIGHT teacher 1905-1910

Author of many books

- 0- Alice Maud BRIGHT born 1864 New Zealand died 30 June 1938 Wellington New Zealand
#Alice Maud Bright born 1864 New Zealand reference RGO NZ birth registration 1864 folio website 1864/8750 parents Eliza and James Bright
#Alice Maud Bright 10 Thorndon quay teacher residential & (brother) Albert Edward Bright Thorndon quay railway clerk residential 1896 & 1899 Wellington Electoral Roll
#Alice Maud Bright Crofton teacher 1903 & 1905-1906 Hutt Electoral Roll
#[b] Wallaceville School Attendance Register July – December 1905 – Teacher not recorded - no reference source on recollect but scanned
#Alice Maud Bright Crofton teacher 1906 Hutt Electoral Roll
#Miss Bright a teacher at Wallaceville has written a book of New Zealand fairy tales. English reviews are favourable and Miss Bright intends next to publish a novel depicting New Zealand life and scenes reference Papers past website Evening Post newspaper 13 August 1908 pg 9
#Alice Maud Bright Tram Road Kelburne spinster 1908 Wellington Suburbs
#[a] 01 January 1908 to June 1908 Teacher Ann_ [sic] BRIGHT Register of Daily Attendance – UHCC Library Heritage collection Location 11a
#[b] Wallaceville School Attendance Register January – June 1908 – teacher not recorded – no reference source on recollect but scanned
#[a] January 1910 to June 1910 Teacher A BRIGHT Register of Daily Attendance – UHCC Library Heritage collection Location 11a
#[b] Wallaceville School Attendance Register January – June 1910 – teacher not recorded – no reference source on recollect but scanned
#January to December 1910 teacher A Bright Wallaceville School Attendance Register reference Upper Hutt City Library Heritage collection recollect website
#Miss A D [sic] Bright or the Wallaceville School has been appointed sole teacher at the Mikimiki School and she will take up her new duties after the September term holidays. Miss Bright who has published two charming books of fairy tales for children is a fine literary critic and articles from her pen have appeared in several leading English magazines. She is very popular among the people of Wallaceville where she has lived for some years and it was largely due to her efforts that the local hall there was built reference Dominion newspaper 18 July 1910
#Alice Maud Bright Tram Road Kelburne/Kelburn spinster 1911 & 1914 Wellington North Electoral Roll
#Alice Maud Bright 2 Richmond Avenue spinster & Albert Edward Bright 2 Richmond Avenue retired & 1935 Wellington Suburbs Electoral Roll (Albert is Alice's brother)
#Miss Alice Bright who recently retired from the staff of the Te Aro School was the principal guest at a little function given in her honour last week reference Papers past website New Zealand Times newspaper 08 April 1919
#Alice Maud Bright died 1938 New Zealand reference RGO NZ death registration 1938 folio website 1938/24386 age 74 born about 1864
#Deaths – Bright on 30 June 1938 at a private hospital Wellington Alice Maud Bright late of 2 Richmond Avenue Karori No flowers by request reference Papers past website Evening Post newspaper 01 July 1938

John McClure BRODIE teacher 1921

- 0- John McClure BRODIE born 05 September 1874 Glasgow Lanarkshire Scotland died 09 April 1964 Glasgow Lanarkshire Scotland married 15 January 1925 Scots Church Wellington New Zealand Margaret Graham FINDLAY born 02 January 1883 Lanarkshire Scotland died 19 November 1963 Glasgow Scotland
#John McClure Brodie Wallaceville school teacher 1919 Otaki Electoral Roll

#[a] January 1920 to 17 December 1920 Teacher J W C BRODIE Register of Daily Attendance – UHCC Library Heritage collection Location 11a
#[a] 01 February 1921 to 30 December 1921 Teacher J W C BRODIE & Ellen M ENGSTROM Register of Daily Attendance – UHCC Library Heritage collection Location 11a
#[b] Wallaceville School Attendance Register February – December 1921 – teacher J M Brodie – no reference source on recollect but scanned
#John McClure Brodie The Manse Colac Bay student 1922 Wallace Electoral Roll Southland
#John McClure Brodie married 1925 New Zealand Margaret Graham Findlay reference RGO NZ marriage registration 1925 folio website 1925/9816

Mrs Ivy Bell CARR teacher 1932-1937

- 0- Ivy Bell ALLAN born 1895 New Zealand died 1973 New Zealand 1st married 1918 New Zealand Martin James CARR born 1889 died 1967 New Zealand 2nd married 1939 New Zealand Frederick Edward CALEY born 1891 died 1965 New Zealand
#Ivy Bell Allan born 1895 New Zealand reference RGO NZ birth registration 1895 folio website 1895/17799 parents Elizabeth & John Allan
#Ivy Bell Allan married 1918 New Zealand Martin James Carr reference RGO NZ marriage registration 1918 folio website 1918/3119
#Ivy Bell Carr 5 Clive Square married & Martin James Carr 5 Clive Square stock dealer 1928 Napier Electoral Roll
#Teacher Appointments – The following appointments of teachers are announced by the wellington Education Board – Mrs I B Carr to be staff teacher at Wallaceville reference Papers past website Evening Post newspaper 22 March 1932 page 3
#[a] Examination Register Wallaceville School Classes All from 01 January 1933 to April 1933 Teacher J B CARR [sic] – UHCC Library Heritage collection Location 11a
#01 January 1933 teacher J B Carr [sic] Wallaceville School Attendance Register reference Upper Hutt City Library Heritage collection recollect website
#Ivy Bell Carr Wallaceville married 1935 Wairarapa Electoral Roll
#Ivy Bell Carr v Martin James Carr desertion reference Papers past website Evening Post newspaper 30 November 1936 page 10
#Teacher appointment Mrs I B Carr sole teacher Wallaceville to assistant mistress Newtown reference Papers past website Evening Post newspaper 05 October 1937 page 6
#Ivy Bell Carr 17 Daniell Street spinster [sic] 1938 Wellington South Electoral Roll
#Ivy Bell Carr married 1939 New Zealand Frederick Edward Caley reference RGO NZ marriage registration 1939 folio website 1939/14306
#Ivy Bell Caley died 1973 New Zealand reference RGO NZ death registration 1973 folio website 1973/43013 age 73 born about 1900

Mr John DOWNING 1885-1927

42 years as a member school committee

- 0- John DOWNING born 04 May 1846 Cornwall England died 25 August 1930 Upper Hutt New Zealand married 1875 Newton Abbot Devon England Louisa Littlejohn FRIEND born 21 June 1852 Tavistock Devon England died 14 November 1944 Lower Hutt New Zealand
#The following gentlemen were elected a committee for the Upper Hutt school last night Messrs K]James Bayliss, Robert Hooper, Charles Swainson, Thomas Cotter, William G Haybittle, John Downing and William Tait. There was very little interest taken in the election only about a dozen householders being present although the district includes four schools. Of those only three represent the Upper Hutt proper two Upper Mungaroa, one Lower Mungaroa and on Wallaceville reference Evening Post newspaper 25 January 1882 page 2
#John Downing residential Mangaroa farmer 1880-1881 Hutt Electoral Roll
#John Downing Mangaroa farmer residential 1900 Otaki Electoral Roll
#John Downing Mangaroa farmer 1905-1906 & 1911 & 1914 Hutt Electoral Roll
#Mr J Downing of Wallaceville has completed 42 years as a member of the Wallaceville School committee reference Papers past website Manawatu Herald newspaper 14 July 1927 page 2
#John Downing died 1930 New Zealand reference RGO NZ death registration 1930 folio website 1930/6873 age 84 born about 1847

#John and Louisa Littlejohn Downing 7 children [1] Mabel Louisa born 1877 [2] Reginald John born 1879 [3] Lucy born 1881 [4] Charity born 1884 [5] Clarence Edward Friend born 1890 [6] Gilbert Edward born 1895 [7] Godfrey Norman born 1896 all born in New Zealand

Miss Annie DUNCAN 1905-1908

- 0- Annie DUNCAN born unknown died unknown
 - #Annie Duncan Gladstone school teacher 1903 Wairarapa Electoral Roll
 - #Annie Duncan Wallaceville teacher spinster 1905-1906 Hutt Electoral Roll
 - #Miss Duncan (Gladstone) has been appointed as teacher at the Wallaceville School (at the request of the latter committee) Miss Cran (Balance) at the Martin borough School and Miss McGowan (Judgeford) as assistant at the Newtown School reference Papers past website Evening Post newspaper 24 February 1905 page 5
 - #[a] July 1905 to 31st December 1905 Teacher A DUNCAN Register of Daily Attendance – UHCC Library Heritage collection Location 11a
 - #01 July 1903 to – 31 December 1905 teacher A Duncan Wallaceville School Attendance Register reference Upper Hutt City Library Heritage collection recollect website
 - #Annie Duncan Wallaceville spinster 1908 Hutt Electoral Roll
 - #The Education Board to-day received the resignations of the following teachers Miss Duncan Wallaceville as from 31 March reference Papers past website Evening Post newspaper 27 February 1908 page 7 & Dominion newspaper 28 February 1908 page 6
 - #Hampden - Miss Duncan was appointed pupil teacher the attendance having warranted the appointment of a pupil teacher reference Papers past website Oamaru Mail newspaper 28 April 1908 & North Otago Times newspaper 30 April 1908 page 1
 - Perhaps #Annie Duncan Gibson's Quay Hokitika spinster & John Timothy Davern Rimu miner 1919 Westland Electoral Roll
 - Perhaps #Annie Duncan married 1919 New Zealand John Timothy Davern reference RGO NZ marriage registration 1919 folio website 1919/3874
-

Miss Sarah ELKIN 1897-1901

- 0- Sarah ELKIN born 1855 Omagh County Tyrone North Ireland died 27 September 1901 Wellington New Zealand
- #Sarah Elkin age 4 departed Liverpool England ship Jessie Munn arrived 09 November 1857 Geelong Australia with mother and siblings
- #Sarah Elkin ship Scotia departed Melbourne ship-wrecked June 1864 Bluff Southland New Zealand
- #Sarah Elkin Upper Hutt school-teacher residential 1893 & 1894 Otaki Electoral Roll
- #[a] July 1895 to December 1895 Teacher S ELKIN Register of Daily Attendance – UHCC Library Heritage collection Location 11a
- #Sarah Elkin Upper Hutt school-teacher residential 1896 Otaki Electoral Roll
- #[a] January 1897 to June 1897 Teacher S ELKIN Register of Daily Attendance – UHCC Library Heritage collection Location 11a
- #January to June 1897 teacher S Elkin Wallaceville School Attendance Register reference Upper Hutt City Library Heritage collection recollect website
- #[b] Wallaceville School Attendance Register January – June 1897 – teacher S Elkin – no reference source on recollect but scanned
- #[a] 12 July 1897 to December 1897 Teacher S ELKIN Register of Daily Attendance – UHCC Library Heritage collection Location 11a
- #Sarah Elkin Upper Hutt school-teacher residential 1897 Otaki Electoral Roll
- #[b] Wallaceville School Attendance Register January – June 1897 – teacher S Elkin – no reference source on recollect but scanned
- #[1897] Miss Sarah Elkin who was charge of the Wallaceville School is a native of Ireland which she left at an early age with her parents on their emigration to Australia. Miss Elkin commenced her education in Australia continuing her studies in Taranaki where her parents had moved. In 1880 she became teacher her first school being at Koru, Taranaki. After two years she entered the Wellington Training College and remained till 1885 then obtaining her first certificate which has since been increased to E1. Miss Elkin was mistress of the Koro Koro School near Petone for four years and received her present appointment in 1889

reference NZETC website 1897 The Cyclopedia of New Zealand Upper Hutt and Surrounding Districts page 844

[a] January 1898 to June 1898 Teacher S ELKIN Register of Daily Attendance – UHCC Library Heritage collection Location 11a

[a] 01 July 1898 to December 1898 Teacher S ELKIN Register of Daily Attendance – UHCC Library Heritage collection Location 11a

[a] 24 January 1899 to 30 June 1899 Teacher S ELKIN Register of Daily Attendance – UHCC Library Heritage collection Location 11a

[a] July 1899 to December 1899 Teacher S ELKIN Register of Daily Attendance – UHCC Library Heritage collection Location 11a

#Sarah Elkin Upper Hutt school-teacher residential 1899 Otaki Electoral Roll

[b] Wallaceville School Attendance Register July – December 1899 – teacher S Elkin – no reference source on recollect but scanned

[a] January 1900 to June 1900 Teacher S ELKIN Register of Daily Attendance – UHCC Library Heritage collection Location 11a

#[b] Wallaceville School Attendance Register January – June 1900 – teacher S Elkin – no reference source on recollect but scanned

#[a] July 1900 to December 1900 Teacher blank (perhaps S ELKIN) Register of Daily Attendance – UHCC Library Heritage collection Location 11a

#[a] 28 January 1901 to 30 June 1901 Teacher S ELKIN Register of Daily Attendance – UHCC Library Heritage collection Location 11a

#[a] 01 July 1901 to 20 December 1901 Teacher blank (noted in November “school closed Teacher leaving”) Register of Daily Attendance – UHCC Library Heritage collection Location 11a

#The Teachers relieving staff of the Education Board has received the following instructions, Miss Holm will relieve Miss Elkin for a month at the Wallaceville School reference Papers past website Evening Post newspaper 28 September 1901 page 4

#Sarah Elkin Upper Hutt School-teacher residential 1893 & 1894 & 1896 & 1897 Otaki Electoral Roll

#July to December 1899 teacher S Elkin Wallaceville School Attendance Register reference Upper Hutt City Library Heritage collection recollect website

#Sarah Elkin Upper Hutt Schoolteacher residential 1899 Otaki Electoral Roll

#January to June 1900 teacher S Elkin Wallaceville School Attendance Register reference Upper Hutt City Library Heritage collection recollect website

#Sarah Elkin died 27 September 1901 Wellington Hospital New Zealand reference RGO NZ death registration 1901 folio website 1901/4546 age 46 born about 1855

#Funeral Notice The Friends of the late Miss Sarah Elkin are respectfully invited to attend her Funeral which will leave the Wellington Hospital on Monday 30th September at 2.30 pm for Karori Cemetery – E Morris Junior Sanitary Undertaker 10 Taranaki Street Telephone 937 reference Papers past website Evening Post newspaper 27 September 1901 page 6

#The teachers relieving staff of the Education Board has received the following instructions – Miss Holm will relieve Miss Elkin for a month at the Wallaceville School, Miss Black is to assist Miss Hall at the Scarborough School for a month and Miss Toohill is to relieve for a month at the Thorndon School reference Papers past website Evening Post newspaper 28 September 1901 page 4

#The following instructions have been issued to the relieving staff of the Education Board – Miss Holm will relieve Miss Elkin for a month at the Wallaceville School, Miss Black is to assist Miss Hall at the Scarborough School for a months, and Miss Roohill is to relieve for a month at the Thorndon School reference Papers past website New Zealand Times 30 September 1901 & New Zealand Mail 02 October 1901

#The following instructions have been issued to the relieving staff of the Education Board – Miss Holm will relieve Miss Elkin for a month at the Wallaceville School, Miss Black is to assist Miss Hall at the Scarborough School for a months, and Miss Roohill is to relieve for a month at the Thorndon School reference Papers past website New Zealand Times newspaper 30 September 1901 page 5

#Sarah Elkin died 27 September 1901 Wellington New Zealand reference RGO NZ death registration 1901 folio website 1901/4546 age 46 born about 1855 (buried Karori cemetery Wellington)

#The devotion to duty by our best teachers is he says most commendable and I feel sure a case has occurred during the past year in which one of our country teachers the late Miss Elkin of Wallaceville might have prolonged her life had she been less conscientious and less self-sacrificing in the discharge of her duties reference Papers past website Evening Post newspaper 01 May 1902 page 4 & New Zealand Mail newspaper 07 May 1902 page 47

Mrs Ellen Mabel ENGSTROM teacher 1921-1922

0- Ellen Mabel WELSBY born 1883 died 1945 New Zealand married 1906 New Zealand Carl Gothrick ENGSTROM born 1867 died 1929 New Zealand

#Ellen Mabel Welsby married 1906 New Zealand Carl Gothrick Engstrom reference RGO NZ marriage registration 1906 folio website 1906/2889

#Mrs Ellen Mabel Engstrom 1917 Wellington Teachers and Civil Service Examinations and Licenses New Zealand Gazette 29 June 1917 No 107 page 2596

#Ellen Mabel Engstrom Te Rangitumuau married & Carl Gothrik Engstrom 30 Albert Street Masterton 1919 Masterton Electoral Roll

#[a] 01 February 1921 to 30 December 1921 Teacher J W C BRODIE & Ellen M ENGSTROM Register of Daily Attendance – UHCC Library Heritage collection Location 11a

#Ellen Mabel Engstrom The School Wallaceville married 1922 Otaki Electoral Roll

#[a] January 1922 to 31 December 1922 Teacher Ellen M ENGSTROM Register of Daily Attendance – UHCC Library Heritage collection Location 11a

#January to December 1922 teacher Ellen M Engstrom Wallaceville School Attendance Register reference Upper Hutt City Library Heritage collection recollect website

#[b] Wallaceville School Attendance Register January – December 1922 – teacher Ellen M Engstrom – no reference source on recollect but scanned

#Wallaceville – A very successful school concert and dance was held in the Wallaceville Hall on Thursday evening. Excellent items were contributed by the following scholars Edna Whiteman, Valerie Whiteman, Linnea Engstrom, Anna Engstrom, Charity Baker, Nancy Keys, Alison Ledswell, Eddie Carruthers, Vaughan Engstrom, Arthur Burton, Arthur Bennett and Herbert Wallen reference Papers past website Dominion newspaper 18 December 1922 pg 5

#Teacher Appointed – The following appointments of teachers by the Education Board have been approved – Ngaio Mrs Engstrom reference Papers past website Dominion newspaper 06 April 1923 page 9

#Teachers Appointed – The following appointments of teachers have been made by the Education Board – Pahautanui sole teacher Mrs Engstrom reference Papers past website Dominion newspaper 04 October 1923 page 11

#Ellen Mabel Engstrom Dalefield married & Carl Gothrik Engstrom Dalefield fur-skin broker 1925 Wairarapa Electoral Roll

#Ellen Mabel Engstrom 66 Colombo Road Masterton widow 1943 Masterton Electoral Roll

#Ellen Mabel Engstrom died 1945 New Zealand reference RGO NZ death registration 1945 folio website 1945/31328 age 62 born about 1883

#Ellen Mabel & Carl Gothrik Engstrom 4 children [1] Linnia Ellen Louise born 1907 [2] Anna Irene Mabel born 1911 [3] Vaughan Gothrik Welsby born 1913 [4] Elsa Marie Sigrid born 1919 all born in New Zealand

Mr Edward FODEN teacher 1881 & 1888

0- Edward FODEN born 1854 baptised 06 August 1854 Newcastle under Lynne St George Staffordshire England died 18 October 1947 Hawera New Zealand married 09 February 1888 Fielding New Zealand Grace Eliza BRAY born 1868 New Zealand died 16 December 1941 Hawera New Zealand

#Edward FODEN born 1854 baptised 06 August 1854 Newcastle under Lynne St George Staffordshire England to parents Lucy and Thomas Foden (1861 census Aston Duddeston)

#Edward Foden departed England ship Mermaid and arrived 1867 in Canterbury New Zealand along with his parents and siblings

#Edward FODEN residential Wallaceville schoolmaster 1880-1881 Hutt Electoral Roll

#The following appointment were recommended to be made Mungaroa School Mr Foden reference Papers past website Evening Post newspaper 27 April 1881 page 2 & New Zealand Times newspaper 28 April 1881 page 3 & New Zealand Mail 30 April 1881 page 16
#Edward FODEN residential Wallaceville schoolmaster 1882-1883 Hutt Electoral Roll
#Edward FODEN residential Wallaceville schoolmaster 1887 Hutt Electoral Roll
#Mr Edward Foden has been selected by the Board for appointment to the Wallaceville School and as the settlers in the district had preciously petitioned in his favour it is assumed that the confirmation of his appointment by the local committee is merely a matter of favour reference Evening Post newspaper 04 April 1888 page 2
#Grace Eliza BRAY born 1868 New Zealand reference RGO NZ birth registration 1868 folio website 1868/21482 parents Emma and Charles Bray
#Edward FODEN married 09 February 1888 Fielding New Zealand Grace E BRAY reference RGO NZ marriage registration 1888 folio 0855 website 1888/1150
#Edward FODEN Master Whiteman School 1888 Wellington Education Board Teachers
#Edward FODEN Master Whiteman School 1889 Wellington Education Board Teachers
#The Recent Teacher Examination – Partial Pass for Class E Edward Foden reference Papers past website Evening Post newspaper 24 February 1890 page 3 & New Zealand Times 25 February 1890
#Edward FODEN residential Wallaceville schoolmaster 1890 Hutt Electoral Roll
#Grace FODEN sewing Whiteman’s 1890 Wellington Education Board
#Edward FODEN Master Whiteman’s School 1890 Wellington Education Board Teachers
#Education Board - Six months leave of absence was granted to Mr Edward Foden Whiteman’s Valley School with a month’s full pay and two months leave to Miss Mabel Evans of Porirua owing to ill health reference Papers past website New Zealand Times newspaper 29 January 1891 & New Zealand Mail 30 January 1891
#Shipping The following is the list of passengers which arrived by the Ruahine from London early on Wednesday for Wellington – E Foden, Mesdames Foden, Messrs T Foden (plus others not transcribed) reference Papers past website New Zealand Mail newspaper 02 January 1896 page 20
#Grace Eliza FODEN died 16 December 1941 Hawera New Zealand reference RGO NZ death registration 1941 folio website 1941/27216 age 73 born about 1868
#Edward FODEN died 18 October 1947 Hawera New Zealand reference RGO NZ death registration 1947 folio website 1947/26377 age 93 born about 1854
#Hawera cemetery burial records Plot 37 Grace Eliza FODEN buried 18 December 1941 (Wilson Street Hawera) – Plot 38 Edward FODEN buried 20 October 1947
#FODEN 5 Issue Frederick Charles born 1888 & Edward Genders born 1893 & Norman Arthur born 1894 & William Roy born 1896 & Ted Noel born 1904 all born in New Zealand to parents Grace Eliza and Edward Foden.
Comment: Edward FODEN was recorded in 1882 as the teacher of Wallaceville School also recorded as Wallace School. We believe that Wallaceville School was opened around May 1881. The Wallace (Wallaceville) School register dated January 1881 recorded against 22 pupils names “*Time since admission 8 months*”. This would leave one to believe that the school was opened 8 months earlier around May 1881 reference UH City Library Heritage collection Location: 11a = Wallaceville School Attendance Registers January 1882 – December 1925 & Examination Registers 1933 – 1937

Mrs HANSEN 1886-1887

#Education Board – The resignation of Miss Treadwell of the Wallaceville School was received and accepted reference New Zealand Mail newspaper 28 May 1886 page 29 & Miss Treadwell of Wallaceville School was allowed to withdraw her resignation reference Papers past website New Zealand Mail 02 July 1886 page 19
#IT was decided to invite application for vacancies in Masterton and Wallaceville Schools reference Papers past website Evening Post newspaper 28 July 1886 page 2
#Education Board - It was decided to transfer Mrs Hansen from Parkville to Wallace reference Papers past website Evening Post newspaper 25 August 1886 page 2 & New Zealand Mail newspaper 27 August 1886 page 9

#The Wallace school children held their annual picnic and treat yesterday in the school grounds. Messrs Lincil, J Downing and Ridler members of the local committee were present and assisted in carrying out the arrangements Mrs Anson [sic] the school mistress being also assiduous in seeing that the children were kept amused reference Papers past website Evening Post newspaper 05 March 1887 page 2

#Mr Edward Foden has been selected by the Board for appointment to the Wallaceville school and as the settlers in the district has previously petitioned in his favour it is assumed that the confirmation of his appointment by the local committee is merely a matter of favour reference Papers past website Evening Post newspaper 04 April 1888 page 2

Comment: I have been unable to identify the Christian names of Mrs Hansen or locate any other information about Mrs Hansen.

Miss May Emma HOLM 1901-1901

0- May Emma HOLM born 12 April 1876 Wellington New Zealand died 29 July 1947 Wellington New Zealand married 11 February 1908 Wellington New Zealand Wilford Baddeley DYER born 1875 died 1955 New Zealand

#May Emma Holm born 1876 wellington New Zealand reference RGO NZ birth registration 1876 folio 1183 no trace on RGO website

#May's siblings were Mary Alfreda born 1872 & Annie Alexander born 1874 & Ferdinand William born 1877 & Eva Mary born 1880 & Sydney born 1882 & John Stermon/Herman Hall born 1886 & Mariner Tucker born 1894 all born in New Zealand to parents Mary Alexander and Ferdinand Holm

#May Emma Holm Wellington 1895 Teachers Examinations and Licenses reference New Zealand Gazette No 14 date 25 February 1898

#1896 Miss Holm relieving teacher Pencarrow School

#1899 Miss Holm relieving teacher at Newtown School transferred to Ohau School

#May Emma Holm Douro Avenue Spinster residential 1899 & 1900 Wellington Electoral Roll

#1900 Island Bay School assistant Miss M E Holm temporary relieving teacher

#1900 Newman School Miss Holm temporary in charge

#1900 Rikiorangi school closed then reopened teacher Miss Holm was sick

#1901 Miss Holm Mauriceville West temporary teacher

#1901 in June Miss Holm temporary teacher Mauriceville School returned to Wellington

#The following instructions have been issued to the relieving staff of the Education Board – Miss Holm will relieve Miss Elkin for a month at the Wallaceville School, Miss Black is to assist Miss Hall at the Scarborough School for a months, and Miss Roohill is to relieve for a month at the Thorndon School reference Papers past website New Zealand Times newspaper 30 September 1901 page 5

#The teachers relieving staff of the Education Board has received the following instructions – Miss Holm will relieve Miss Elkin for a month at the Wallaceville School. Miss Black is to assist Miss Hall at the Scarborough School for a month and Miss Toohill is to relieve for a month at the Thorndon School reference Papers past website New Zealand Times 30 September 1901 & New Zealand Mail 02 October 1901

#May Emma Holm 1905 plus other dates NZ Teacher and Civil Service Examinations and Licenses

#May Emma Holm Karori Crescent spinster & Annie Alexander Holm Karori Crescent school teacher & Eva Mary Holm Karori Crescent spinster & Ferdinand Holm Karori Crescent master mariner & Sydney Holm Karori Crescent master mariner 1905-1906 Wellington North Electoral Roll

#May Emma Holm married 1908 New Zealand Wilford Baddeley Dyer reference RGO NZ marriage registration 1908 folio website 1908/1531

#May Emma Dyer died 31 July 1947 New Zealand reference RGO NZ death registration 1947 folio website 1947/24971 age 71 born about 1876 (buried Karori cemetery Wellington)

Comment: Some of May's sisters also became teachers so it took a lot of research to locate the correct Miss Holm

Miss Edith Monica JOHNSON 1913-1919

0- Edith Monica JOHNSON born 1872 New Zealand died August 1952 New Zealand

#Edith Monica Johnson born 1872 New Zealand reference RGO NZ birth registration 1872 folio website 1872/37687 parents Mary Jane and Alphonso William Johnson
#Edith's siblings Vida Blache born 1867, Bertha Mary born 1869, Florence Maude born 1876, Rosetts Ava born 1878, Claude Harold born 1880, Olive Zealandia born 1883 all born in New Zealand to parents Mary Jane and Alphonso William Johnson
#Teachers Examinations –Class E Edith Monica Johnson reference Papers past website Evening Post newspaper 24 February 1898 page 4 plus other newspapers and dates
#Edith Monica Johnson Akatarawa schoolteacher spinster 1908 Hutt Electoral Roll
#Edith Monica Johnson Akatarawa spinster 1911 Otaki Electoral Roll
#Schools Akatarawa Teacher Miss E M Johnson reference Papers past website Hutt Valley Independent newspaper 07 December 1912 page 3
#The following appointments were made at yesterday's meeting of the Wellington Education Board Wallaceville (sole teacher) Miss E M Johnson reference Papers past website Dominion newspaper 11 December 1912 page 6
#Miss Johnson of the Akatarawa School takes charge of the Wallaceville School after the holidays reference Papers past website Hutt Valley Independent 04 January 1913 page 2
#Schools Wallaceville Teacher Miss E M Johnson reference Papers Past website Hutt Valley Independent newspaper 05 July 1913 page 3
#Edith Monica Johnson Wallaceville Upper Hutt spinster 1914 Hutt Electoral Roll
#[a] January 1914 to December 1914 Teacher E M JOHNSON Register of Daily Attendance – UHCC Library Heritage collection Location 11a
#January to December 1914 teacher E M Johnson Wallaceville School Attendance Register reference Upper Hutt City Library Heritage collection recollect website
#[b] Wallaceville School Attendance Register January – December 1914 – teacher not recorded – no reference source on recollect
#04th February to December 1919 teacher Edith M Johnson Wallaceville School Attendance Register reference Upper Hutt City Library Heritage collection recollect website
#[a] 04 February 1919 to December 1919 Teacher Edith M JOHNSON Register of Daily Attendance – UHCC Library Heritage collection Location 11a
[b] Wallaceville School Attendance Register January – December 1919 – teacher Edith M Johnson – no reference source on recollect
#Red Cross Gifts – The following have sent gifts to the Red Cross depot Mercer Street during the past week – E M Johnson Wallaceville school Mrs W S Reid, Miss Metz Ohau branch British Red Cross (plus many others) reference Papers past website New Zealand Times newspaper 06 March 1917 page 8
#The St Johns Ambulance Brigade Red Cross Society Star boating sheds Jervious Quay acknowledge with thanks donations of money and hospital equipment from the following – Wallaceville School per Miss Johnson reference Papers past website Dominion newspaper 08 February 1918 page 3
#The monthly meeting of the St Johns Ambulance Brigade and Red Cross Society held at the Star Boating Club was well attended – Goods and donations received from the following are acknowledged with thanks – Wallaceville School (plus other schools) reference Papers past website Evening Post 12 October 1918 & New Zealand Times 12 October 1918
#Wallaceville School - A deputation from settlers at Wallaceville waited on the Education Board yesterday and asked that the school should be left where it is at present. The school had been there about forty years and it was also considered that the road to the site selected for the new school was a dangerous one. The Chairman said the idea at the back of selecting the new site at Mungaroa was to centralise but the deputation urged that centralisation would be too big a price to pay for the change and that the present site filled all the requirements and served the needs of the greater portion of the community. There were it was added about five acres of land attached to the school which had a really fine educational record. The Chairman informed the deputation that the question would be considered by the board with the greatest care and the Wallaceville Committee would be informed of the decision in due course reference Papers past website Evening Post newspaper 20 March 1919 page 3
#Edith Monica Johnson Wallaceville Upper Hutt spinster & Vida Blanche Johnson Wallaceville Upper Hutt spinster 1919 Otaki & Hutt Electoral Roll

#Teachers Appointment Reikiorangi (sole teacher) Miss E M Johnson reference Papers past website Evening Post newspaper 03 July 1919 page 7
#Edith Monica Johnson Kaiparoro via Eketahuna spinster & Vida Blanche The Schoolhouse Kaiparoro spinster 1922 Masterton Electoral Roll
#Edith Monica Johnson died 1952 New Zealand reference RGO NZ death registration 1952 folio website 1952/25973 age 80 born about 1872
#Deaths Johnson The funeral of the late Edith Monica Johnson will leave the Chapel of J Lamb and Son 234 Lichfield Street tomorrow (Tuesday) at 1.15 pm for a service at the Cremation Chapel J Lamb and Son reference Papers past website Press newspaper 11 August 1952

Mrs Dorothy Margaret SAUNDERS 1925-1925

- 0- Dorothy Margaret GILES bon 25 September 1895 Wellington Somerset England died 1953 Reading Berkshire England married 06 September 1919 Aberdare St Fagan Glamorganshire Wales Lionel Ralph Stanley SAUNDERS born 1891 Taunton Somerset England died 14 September 1964 Taunton Somerset England
#Mr L Saunders age 32 & Mrs Saunders age 32 & Master W Saunders age 4 all from England departed Sydney 04 December 1923 and arrived Wellington New Zealand 1923 on ship Manuka
#Dorothy Margaret Saunders Wallaceville married & Lionel Ralph Stanley Saunders Wallaceville farm student 1925 Otaki Electoral Roll
#[a] 15 April 1925 to 28 December 1925 Teacher D W Saunders Register of Daily Attendance – UHCC Library Heritage collection Location 11a
#15th April 1925 to December 1925 teacher D M Saunders Wallaceville School Attendance Register reference Upper Hutt City Library Heritage collection recollect website
#[b] Wallaceville School Attendance Register April – December 1925 – teacher D M Saunders – no reference source on recollect but scanned
#Dorothy Margaret Saunders Poole Street Fielding married & Lionel Ralph Stanley Saunders Poole Street Fielding farmer 1928 & 1931 & 1935 Oroua Electoral Roll
#Saunders Pilot Officer William Anthony 40756 RAF 21 Sqdn 14th June 1940 age 20 Son of Lionel Ralph Stanley Saunders and Dorothy Margaret Sanders of Reading Berkshire panel 10 Commonwealth War Grave

Mrs Olive Isabel SCHOLES 1924-1925

- 0- Olive Isabel CLIFFORD born 1890 New Zealand died 18 July 1971 Auckland New Zealand married 1921 New Zealand Leonard SCHOLES born 1892 New Zealand died 10 August 1958 New Zealand
#Olive Isabel Clifford born 1890 New Zealand reference RGO NZ birth registration 1890 folio website 1890/10367 parents Sarah Emily and Frederick Augustus Clifford
#Olive Isabel Clifford Tokomaru spinster 1911 Otaki Electoral Roll
#It was agreed to appoint Miss O I Clifford as pupil teacher of the fourth year at Southbrook subject to satisfactory report from the Wellington inspectors and approval of the Education Department reference Papers past website Star (Christchurch) 19 February 1913 page 5
#Appointments of Teachers – It was agreed to appoint Miss O I Clifford as pupil teacher of the fourth year at Southbrook subject to satisfactory report from the Wellington inspectors and approval of the Education Department reference Papers past website Lyttleton Times newspaper 20 February 1913 age 2
#Olive Isabel Clifford The School Southbrook spinster 1914 Kaiapoi Electoral Roll
#Olive Isabel Clifford 16 Roxburgh Street spinster 1919 Wellington East Electoral Roll
#Olive Isabel Clifford Newman Road Eketahuna spinster 1919 Masterton Electoral Roll
#Resignation of Teacher The following resignations of teachers were accepted by the Wellington Education Board yesterday Miss O I Clifford sole teacher Mangamaire (30th June) reference Papers past website Evening Post newspaper 22 May 1919 page 7
#Resignations and Appointments - The following resignations were accepted Miss O I Clifford assistant (Haitaitai) reference Papers past website New Zealand Times newspaper 17 March 1921 page 3

#Olive Isabel Clifford married 1921 New Zealand Leonard Scholes reference RGO NZ marriage registration 1921 folio website 1921/1272
#[a] 05 February 1924 to 19 December 1924 Teacher O J SCHOLES Register of Daily Attendance – UHCC Library Heritage collection Location 11a
#05th February 1924 to 19th December 1924 teacher O J Scholes Wallaceville School Attendance Register reference Upper Hutt City Library Heritage collection recollect website
#[b] Wallaceville School Attendance Register February – December 1924 – teacher O I Scholes – no reference source on recollect but scanned
#Education Board Monthly Meeting – The following resignation of teachers were accepted Mrs O I Scholes (Wallaceville) reference Papers past website Dominion newspaper 27 March 1924 page 5 & Evening Post newspaper 26 March 1924 page 6
#Olive Isabel Scholes Wallaceville married & Leonard Scholes Wallaceville farmer 1925 Otaki Electoral Roll
#Mrs O Scholes has been appointed sole teacher at the Reikorangi School reference Papers past website Manawatu Standard newspaper 13 August 1926 page 11 & Dominion newspaper 13 August 1926 page 2
#Olive Isabel Scholes Wallaceville married & Leonard Scholes Wallaceville farmer 1928 Wairarapa Electoral Roll
#Olive Isabel Scholes died 1971 New Zealand reference RGO NZ death registration 1971 folio website 1971/40075 age 80 born about 1891

Miss Florence McLean THOMSON 1910-1913

- 0- Florence McLean THOMSON born 17 January 1889 New Zealand died 1979 New Zealand married 1915 New Zealand Malcolm Duncan COLQUHOUN born 1887 New Zealand died 1963 New Zealand
#Florence McLean Thomson born 17 January 1889 New Zealand reference RGO NZ birth registration 1889 folio website 1889/18323 parents Florence and Alexander Thomson
#Wellington Education Board Separate Application which must be made on forms obtainable at the Board Office will be received until Noon of Thursday 21th July for the following salaries are quoted in each case. Wallaceville (near Silverstream) Sole Teacher £120 to £150 and house reference Paper Past website New Zealand Times newspaper 12 July 1910 page 3
#Education Board Appointments – The following appointment are announced by the Education Board – Mikimiki sole teacher Miss A Bright now at Wallaceville reference Papers past website Evening Post newspaper 13 July 1910 page 3
#The following school staff appointments have been made by the Wellington Education Board Wallaceville Sole Teacher Miss F Thomson reference papers past website Evening Post newspaper 09 August 1910 page 6
#Gladstone Notes The newly-appointed assistant mistress Miss Thomson of Petone takes up her duties at the local school this week reference Papers past website Wairarapa Daily Times newspaper 01 February 1910 page 5
#Florence McLean Thomson 4 Britanni Street Petone spinster & Alexander Thomson Britanni Street Petone clergyman & Isabel McLean Thomson 4 Britannia Street Petone spinster 1911 Hutt Electoral Roll
#Schools Wallaceville Roll 24 teacher Miss Florence Thomson Committee Messrs EE Burrell (chairman) H Alexander (secretary) Messrs J Alexander, J Downing, A Scholes reference Hutt Valley Independent newspaper 09 February 1911 page 4 plus other dates also 1912 & 1913
#[a] January 1912 to June 1912 Teacher F Thomson Register of Daily Attendance – UHCC Library Heritage collection Location 11a
#January to June 1912 teacher F Thomson Wallaceville School Attendance Register reference Upper Hutt City Library Heritage collection recollect website
#[b] Wallaceville School Attendance Register January – June 1912 – teacher L Thomson – no reference source on recollect but scanned
#[a] 30 June 1912 to 31 December 1912 Teacher F Thomson Register of Daily Attendance – UHCC Library Heritage collection Location 11a
#Wallaceville – Teacher – Miss Florence Thomson reference Papers past website Hutt Valley Independent newspaper 15 March 1913 page 3

#Miss Johnson of the Akatarawa School takes charge of the Wallaceville School after the holidays reference Papers Past website Hutt Valley Independent 04 January 1913 page 2
#Florence McLean Thomson 4 Britannia Street Petone spinster 1914 Hutt Electoral Roll
#Florence McLean Thomson Miki Miki Masterton spinster 1914 Masterton Electoral Roll
#Florence McLean Thomson Miki Miki spinster 1914 Wairarapa Electoral Roll
#News has been received of the death at Petone this morning after a short illness of the Rev Alexander Thomson Presbyterian minister. He came to New Zealand and was ordained in 1889 and for some time was minister of the Martinborough Presbyterian Church. Later he was called to the Petone charge. He took a considerable interest in public affairs and will be considerably missed by others besides his parishioners. Deceased who was about 56 years of age leaves a wife and family a daughter being Miss Thomson teacher at the Miki Miki school who will have the deep sympathy of a large circle of friends in their sad bereavement reference Papers past website Wairarapa Daily Times 07 March 1914 page 5
#The following resignations of school teachers were accepted by the Education Board yesterday Miss F M Thomson Mikimiki reference Papers past website Evening Post newspaper 27 January 1915 page 3 & New Zealand Times newspaper 27 January 1915 pg 9
#Florence McLean Thomson married 1915 New Zealand Malcolm Duncan Colquhoun reference RGO NX marriage registration 1915 folio website 1915/1700
#Florence McLean Colquhoun died 1979 New Zealand reference RGO NZ death registration 1979 folio website 1979/42810 born 17 January 1889

Mr Montfort TRIMBLE teacher 1883-1883

- 0- Montfort TRIMBLE born 1863 Garston Lancashire England died 22 May 1940 Masterton New Zealand married 1906 New Zealand Annie Martin MONCKTON born 1864 Tonbridge Kent England died 30 September 1948 Masterton New Zealand
#Education Board – Resignations and Appointments – Appointments of teachers were made thus – Mr Manning promoted from Thorndon to be first assistant at Newtown School, Mr Jenkins promoted from Thorndon to be master of Kaitoke school, Mr M Trimble (new appointment) to be master of Wallaceville school, Mr L W Deakin to be pupil teacher at Mount Cook school reference Paper past website New Zealand Times 27 September 1883 page 2
#Education Board – Resignations and Appointments – Appointments of teachers were made thus – Mr Manning promoted from Thorndon to be first assistant at Newtown School, Mr Jenkins promoted from Thorndon to be master of Kaitoke school, Mr M Trimble (new appointment) to be master of Wallaceville school, Mr L W Deakin to be pupil teacher at Mount Cook school reference Paper past website New Zealand Mail 29 September 1883 page 2
#At the committee meeting of the City Council on Thursday night Mr M Trimble son of Col. Trimble M.H.R. was appointed junior clerk in the Town Clerk's office in the place of Mr Cattell who recently resigned owing to ill health reference Paper past website New Zealand Times newspaper 22 December 1883 page 2
#Montford Trimble residential Nairne Street clerk 1885-1886 Te Aro Electoral Roll Wellington
#Montford Trimble residential Mowbray Street clerk 1887 Thorndon Electoral Roll Wellington
#Moutford Trimble married 1906 New Zealand Annie Martin Mouckton reference RGO NZ marriage registration 1906 folio website 1906/1810
#Mountfort Trimble died 1940 New Zealand reference RGO NZ death registration 1940 folio website 1940/24677 age 77 born about 1863
#Mountfort Trimble birth date 1863 birth place England death date 22 May 1940 death place Masterton buried Archer Street cemetery Masterton headstone In loving memory of Monfort Trimble died 22 May 1940 aged 77 also his wife ANN M TRIMBLE died 30 October 1948

Miss Laura Augusta TREADWELL 1885-1866

- 0- Laura Augusta TREADWELL born 1868 Australia died 17 July 1962 England or Kanya married 1897 Kensington England William Walter HARVERSON born 01 January 1860 Hackney Middlesex England died 28 September 1939 Hampstead England
#The following appointments were made by the Education Board yesterday Wallaceville Miss Treadwell reference Papers past website New Zealand Times newspaper 28 May 1885 page2
#The following appointments were made by the Education Board Wednesday – Wallaceville Miss Tredwell reference Papers past website New Zealand Mail 29 May 1885 page 12

#[a] 01 July 1885 to 18 December 1885 Teacher L A Treadwell Register of Daily Attendance – UHCC Library Heritage collection Location 11a

#[b] Wallaceville School Attendance Register July – December 1885 – teacher L A Treadwell – no reference source on recollect but scanned

#The principal results of the examination of teachers held in December last are published in the Gazette. The Wellington candidates mentioned are as follows passed examinations for class E - Passed in subjects required to complete former examinations - Laura A Treadwell [E]. Misses Treadwell and Dowdeswell are too young to hold full certificate reference Papers past website Evening Post newspaper 05 March 1886 page 2

#Education Board – The resignation of Miss Treadwell of the Wallaceville School was received reference Papers past website Evening Post newspaper 26 May 1886 page 3

#Education Board – The resignation of Miss Treadwell of the Wallaceville School was received and accepted reference Papers past website New Zealand Times newspaper 27 May 1886 page 3 & 28 May 1886 page 29 & New Zealand Mail 28 May 1886 page 29

#Education Board – Miss L A Treadwell obtained permission to withdrawn her resignation as a teacher in the service of the Board reference Papers past website Evening Post newspaper 30 June 1886 page 2

#Mrs Grady's resignation of her position as assistant mistress at the Willis Street School was accepted and Miss Treadwell of the Wallaceville School was allowed to withdrawal her resignation reference Papers past website New Zealand Times newspaper 01 July 1886 page 2 & New Zealand Mail newspaper 02 July 1886 page 19

#Appointments – Miss L Treadwell was appointed to Wadestown at a salary of £90 reference Papers past website New Zealand Times newspaper 29 July 1886 page 2 & New Zealand Times 30 July 1886 page 23

Three applications have been received for the position of assistant at Wadestown which is at present held by Miss Treadwell reference Evening Post newspaper 23 November 1886 pg 2

#The following appointment were made by the Board of Education to-day Assistant at Upper Hutt Miss L Treadwell salary £90 reference Papers past website Evening Post newspaper 27 April 1887 Page 2

#The action of the Board of Education in selecting Miss Treadwell as assistant in the Upper Hutt School reference Papers past website Evening Post newspaper 05 May 1887 page 2

#Miss Laura Augusta Treadwell residence date 14 July 1890 Residence place Wellington Publication date 14 July 1890 Teacher and Civil Examinations and Licences reference Ancestry website New Zealand Gazette page 807

#Laura Treadwell Elizabeth Street school teacher residential & Clara Treadwell Elizabeth Street school teacher residential & Charlotte Treadwell Elizabeth Street widow residential 1893 Wellington Electoral Roll

#Miss Laura Treadwell of the Upper Hutt applied to be transferred to Wellington as otherwise she would have to resign. The matter was ordered to stand over for the present reference Papers past website New Zealand Times newspaper 30 March 1893 page 2 & New Zealand Mail newspaper 07 April 1893 page 41

#The financial committee recommended that the salary of Miss Treadwell should be continued at the rate of £80 per annum in consideration of the fact that she had been transferred from the Upper Hutt school where she received a salary of £85 reference Papers past website New Zealand Mail 28 July 1893 page 30

#Laura Treadwell Elizabeth Street school teacher residential & Clara Treadwell Elizabeth Street school teacher residential & Charlotte Treadwell Elizabeth Street widow residential 1894 Wellington Electoral Roll

#Miss Laura Treadwell a teacher in one of the Wellington schools is an expert cyclist. The way in which she rides her machine along the busiest streets of the Empire City is the envy of those members of her sex who have also gone in for biking reference Papers past website Observer 21 July 1894 page 3

#Laura Treadwell Elizabeth Street school teacher residential & Clara Treadwell Elizabeth Street school teacher residential & Charlotte Treadwell Elizabeth Street widow residential 1896 Wellington Electoral Roll

#Laura Treadwell Elizabeth Street school teacher residential & Charlotte Treadwell Elizabeth Street widow residential 1897 Wellington Electoral Roll

#Miss Laura Treadwell was the pioneer woman cyclist in Wellington. It was only five or six years ago but it is amusing to recall the sensation she made how her own sex for the most part thought her a bold and forward girl and how the men used to turn and stare at her when she passed as though she were a monstrosity and within six years they find all their sisters and wives cycling and no one thinks any the less of them for it. Miss Treadwell's historic position in the matter is recalled by the fact that she has just been married in London and is now Mrs Harverson. In her wedding by the way she acted just as unconventionally as in Wellington she did in other matters besides cycling for she and her intended cycled quietly to church and, unbeknownst to their friends (save one lady who gave her away) had the knot tied and then went off on their honeymoon on their machines reference Papers past website Observer newspaper 20 November 1897 page 6

#Mrs Haverson who was well known in Wellington a few years ago when, she was Miss Laura Treadwell has returned from England and proposes to reside here for a year or two. It will be remembered that as Miss Treadwell she was perhaps the best stared at lady in Wellington owing to her pluck in being the first of her sex to venture out into the streets on a bicycle in this city. In England too Miss Treadwell who was a keen cyclist introduced the novelty of a cyclists wedding she and her husband and wedding party cycled to a pretty church in the suburb of London were married and merrily cycled away again on their honeymoon tour reference Papers past website Free Lance newspaper 11 January 1902 page 17

#Miss Laura Augusta Treadwell residence date 1903 Residence place Auckland Publication date 30 June 1903 Teacher and Civil Examinations and Licences reference Ancestry website New Zealand Gazette page 1507

Mr Montfort TRIMBLE teacher 1883 - 1883

0- Montfort TRIMBLE born 1863 Garston Lancashire England died 22 May 1940 Masterton New Zealand married 1906 Newstead New Zealand Annie Martin MONCKTON born 1864 Tonbridge Kent England died 30 September 1948 Masterton New Zealand

#Education Board – Resignations and Appointments – Appointments of teachers were made thus – Mr Manning promoted from Thorndon to be first assistant at Newtown School, Mr Jenkins promoted from Thorndon to be master of Kaitoke school, Mr M Trimble (new appointment) to be master of Wallaceville school, Mr L W Deakin to be pupil teacher at Mount Cook school reference Paper past website New Zealand Times newspaper 27 September 1883 page 2 & New Zealand Mail 29 September 1883 page 22

#Education Board – Resignations and Appointments – Appointments of teachers were made thus – Mr Manning promoted from Thorndon to be first assistant at Newtown School, Mr Jenkins promoted from Thorndon to be master of Kaitoke school, Mr M Trimble (new appointment) to be master of Wallaceville school, Mr L W Deakin to be pupil teacher at Mount Cook school reference Paper past website New Zealand Mail 29 September 1883 page 2

#At the committee meeting of the City Council on Thursday night Mr M Trimble son of Col. Trimble M.H.R. was appointed junior clerk in the Town Clerk's office in the place of Mr Cattell who recently resigned owing to ill health reference Paper past website New Zealand Times newspaper 22 December 1883 page 2

#Montford TRIMBLE residential Nairne Street clerk 1885-1886 Te Aro Electoral Roll

#Montford TRIMBLE residential Mowbray Street clerk 1887 Thorndon Electoral Roll

#Moutford Trimble married February 1906 Featherston New Zealand Annie Martin Mouckton reference RGO NZ marriage registration 1906 folio website 1906/1810

#Montfort Trimble Upper Plain Masterton solicitor & Annie Martin Trimble Upper Hutt Plain Masterton married 1938 Masterton Electoral Roll

#Mountfort Trimble died 1940 New Zealand reference RGO NZ death registration 1940 folio website 1940/24677 age 77 born about 1863

#Mountfort Trimble birth date 1863 birth place England death date 22 May 1940 death place Masterton buried Archer Street cemetery Masterton headstone In loving memory of Monfort Trimble died 22 May 1940 aged 77 also his wife Ann M Trimble died 30 October 1948

WALLACEVILLE SCHOOL - PUPILS

<i>Timeline</i>	<i>Wallaceville School pupils</i>
1881	22 foundation pupils
1882	33 pupils
1885	23/37 pupils
1886	35 pupils
1887	35 pupils
1888	33 pupils
1889	33 pupils
1890	unknown
1891	35 pupils
1892	unknown
1893	31 pupils
1894	unknown
1895	30 pupils
1896	30 pupils
1907	26 pupils

New Zealand Public School Register of Daily Attendance issued by authority under The Education Act 1877 Section 100 – This register is the Property of the Committee of the School District in which it is issued. Wallace Public School - (blank) Class – Edward FODEN Teacher Register of Attendance from January 1882 to 29 September 1882 (for Instructions see last page of Cover – By Authority George Didsbury Government Printer Wellington.

NOTE – the register recorded against 22 pupils names “*Time since admission 8 months*”. This would leave one to believe that the school was opened 8 months earlier around April

GIRLS

<i>Name</i>	<i>Age</i>	<i>remarks</i>
Burrell Edith	5/6	Time since admission 8 months
Burrell Felicia	5/7	Time since admission 8 months
Burrell Mary	12/2	Time since admission 8 months
Cooley Ethel	5/8	Time since admission 8 months
Downing Mabel	5/8	Time since admission 8 months
Hughes Preston	8/2	Time since admission 8 months
Langdon Jane	10/5	Time since admission 8 months
Langdon Rose	6/9	Time since admission 8 months
Lee Annie	12/10	Time since admission 8 months
Lee Clara	5/8	Time since admission 8 months
Linsell Minnie	5/6	Time since admission 8 months
Mitchell Ellen	5/8	Time since admission 8 months
Robinson Mary	5/6	Time since admission 8 months
Robinson Sarah	6/8	Time since admission 8 months
Scrimshaw Elizabeth	5/3	Time since admission 2 months
Scrimshaw Lucy	7/3	Time since admission 3 months
Scrimshaw Maggie	10/3	Time since admission 3 months
Smith Alice	12/8	Time since admission 6 months
Smith Mary	10/8	Time since admission 6 months
Smith Matilda	5/0	Time since admission 0 months

BOYS

<i>Name</i>	<i>Age</i>	<i>remarks</i>
Burrell Alfred	14/4	Time since admission 8 months
Burrell Ernest	8/8	Time since admission 8 months
Burrell George	6/8	Time since admission 8 months
Burrell Joseph	10/2	Time since admission 8 months

Burrell W A	7/10	Time since admission 8 months
Burrell Walter	10/8	Time since admission 8 months
Cooley Isaac	7/8	Time since admission 8 months
Fairy James	11/5	Time since admission 8 months
Langdon G A	Blank	Blank
Lee Henry	Blank	Blank
Smith Thomas	7/3	Time since admission 6 months
Whiteman John	5/3	Time since admission 4 months
Wordmass Fredk	9/0	Blank

(Reference UH City Library Heritage collection Location: 11a = Wallaceville School Attendance Registers January 1882 – December 1925 & Examination Registers 1933 – 1937)

A – Z Pupils

Mary & Joseph & William & Felicia BURRELL foundation pupils

- 0- William BURRELL born 28 June 1847 Benhall Suffolk England died 30 December 1940 Upper Hutt New Zealand married 15/18 October 1868 Upper Hutt New Zealand Emily [Amelia] ALEXANDER born 1851 Darlington Durham England died 01 February 1929 Upper Hutt New Zealand
#William Burrell freehold Mangaroa farmer Section 227 Mungaroa 1882-1884 Hutt Electoral Roll
- 0-1- Mary Agnes BURRELL** born 1869 New Zealand parents Emily & William Burrell RGO NZ birth 1869/10884
- 0-2- Joseph James BURRELL** born 1871 New Zealand parents Emily & William Burrell RGO NZ birth 1871/21693
- 0-3- William Aaron BURRELL** born 1874 New Zealand parents Emily & William Burrell RGO NZ 1874/25840
- 0-4- Felicia Alexandrina BURRELL** born 1876 New Zealand parents Emilia [sic] & William Burrell RGO NZ birth 1876/16198
- 0-5- Henry John BURRELL born 1878 New Zealand parents Emily & William Burrell RGO NZ birth 1878/16458]
- 0-6- Tom Samuel BURRELL born 1881 Upper Hutt New Zealand

Walter & Ernest & George & Edith BURRELL foundation pupils

- 0- John Frederick BURRELL born 1840 Suffolk England died 08 July 1889 Mangaroa Upper Hutt New Zealand married 1869 Gippsland Victoria Australia Frances (Fanny) BEASLEY born 1840 England died
#John Burrell residential Mungaroa labourer 1882-1884 Hutt Electoral Roll
- 0-1- Walter James Burrell** born 1871 Matlock Victoria Australia died 1909 age 38 RGO NZ death 1909/3180
- 0-2- Ernest Edward Burrell** born 1872 Matlock Victoria Australia died 1945 age 73 New Zealand RGO NZ death 1945/28746
- 0-3- George William Burrell** born 1875 Matlock Victoria Australia
- 0-4- Edith Amy Burrell** born 1877 Matlock Victoria Australia
- 0-5- Constance Burrell born 17 January 1879 Upper Hutt New Zealand parents Fanny & John Burrell RGO NZ birth 1879/1432

Alfred BURRELL foundation pupil

Alfred BURRELL age 14 years 4 month in 1882 = born between 1867 – 1868 all other details unknown

Isaac & Ethel COOLEY foundation pupils

- 0- James Edmund COOLEY born 04 August 1843 Lower Hutt New Zealand died 01 September 1911 Wellington New Zealand married 1872 New Zealand Mary MAYFIELD born 1843 St Luke London England died 21 October 1923 New Zealand
#James Edmund Cooley freehold Mungaroa farmer Section 448 Mungaroa 1882-1884 Hutt Electoral Roll

- 0-1- Emily Edith COOLEY born 1873 New Zealand parents Mary & James Cooley RGO NZ birth 1873/15747
- 0-2- Isaac Ernest COOLEY** born 1874 New Zealand parents Mary & James Cooley RGO NZ birth 1874/17531
- 0-3- Ethel COOLEY** born 1876 New Zealand parents Mary & James Edmund Cooley RGO NZ birth 1876/965
- 0-4- Albert COOLEY born 1879 New Zealand parents Mary & James Edmund Cooley RGO NZ birth 1879/1269
-

Mabel DOWNING foundation pupils

- 0- John DOWNING born 04 May 1846 Cornwall England died 25 August 1930 Upper Hutt New Zealand married 1875 Newton Abbot Devon England Louisa Littlejohn FRIEND born 1852 England died 14 November 1944 Upper Hutt New Zealand
- 0-1- Mabel Louisa DOWNING** born 1877 Upper Hutt New Zealand parents Louisa & John Downing RGO NZ birth 1877/4096
- 0-2- Reginald John Downing born 1879 Upper Hutt New Zealand parents Louisa & John Downing RGO NZ birth 1879/14913
- 0-3- Lucy Downing born 1881 Upper Hutt New Zealand parents Louisa & John Downing RGO NZ birth 1881/6971
-

James FAIRY foundation pupil

- 0- James FAIREY born 28 September 1830 Easton Huntingdonshire England died 03 May 1905 Napier New Zealand married 29 August 1852 Great Paxton Huntingdonshire England Martha Susannah BYWATERS born 1830 Great Paxton Huntingdonshire England died 30 June 1896 Upper Hutt New Zealand
#James Fairley freehold Mungaroa farmer Section 136 Mungaroa Valley 1882-1884 Hutt Electoral Roll
- 0-1- Emily Ann Fairley born 1852 Great Paxton Huntingdonshire England
- 0-2- Alvina Alma Fairley born 1855 Great Paxton Huntingdonshire England
- 0-3- Herbert John Fairley born 1858 Great Paxton Huntingdonshire England
- 0-4- Rosina Rebecca Fairley born 1860 Great Paxton Huntingdonshire England
- 0-5- Esther Fairley born 1862 Great Paxton Huntingdonshire England
- 0-6- Julia Fairley born 1865 Great Paxton Huntingdonshire England
- 0-7- Herbert James Fairey** born 1869 Northamptonshire England died 02 June 1901 age 30 New Zealand RGO NZ death 1901/2797
- 0-8- Alvinia Alma Fairley born 1873 Great Paxton Huntingdonshire England
-

Preston HUGHES foundation pupil

- 0- George HUGHES born 1821 place unknown died 1879 New Zealand married 1864 New Zealand Janet KINNIBURGH born 1829 place unknown died 1875 New Zealand
- 0-1- Maggie/Maggy/Margaret Preston Hughes** born 1873 New Zealand parents Janet & George Hughes RGO NZ birth 1873/14897 (died 06 January 1925 NZ under Preston Margaret Hughes)
#Preston Margaret Hughes Upper Hutt spinster 1903 & 1905-1906 Hutt Electoral Roll
-

Jane & Rose & George LANGDON foundation pupils

- 0- Charles Frederick LANGDON born 16 May 1849 Leamington Warwickshire England died New Zealand married 24 July 1870 Deptford Greenwich Kent Lewisham England Emma Sabina DYE born 28 July 1850 Leverington Cambridge England died 26 October 1885 Upper Hutt New Zealand
#Charles F Langdon residential Upper Hutt farmer 1887 Hutt Electoral Roll
- 0-1- Elizabeth Jane Langdon** born 12 July 1871 Southwark London Middlesex England
- 0-2- Rose Annie Langdon** born 1875 New Zealand parents Emma Sabrine & Charles Frederick Langdon RGO NZ birth 1875/8103
- 0-3- George Alexandra Manning Langdon** born 19 December 1877 Upper Hutt New Zealand parents Emma Sabrina & Charles Frederick Langdon RGO NZ birth 1878/14151
-

Henry & Annie & Clara LEE foundation pupils

- 0- Richard Reuben LEE born 02 May 1842 Alfretton Derbyshire England died 02 June 1931 Hamilton New Zealand married 26 December 1866 Ripley Derbyshire England Martha HICKING born 1844 died 19 May 1938 New Zealand
#Richard Lee freehold Mungaroa farmer Part Section 8 Mungaroa Valley 1880-1881 Hutt Electoral Roll
- 0-1- Ernest Lee born 1867 Camberwell England
- 0-2- Henry Lee** born 18 September 1868 Lincoln Lincolnshire England
- 0-3- Ann (Annie) Elizabeth Lee** born 21 January 1869 Nottinghamshire England
- 0-4- George Reuben Lee born 1871 Nottinghamshire England died 1876 New Zealand
- 0-5- Clara LEE** born 1876 Upper Hutt New Zealand parents Martha & Richard Lee RGO NZ birth registration 1876/7230
- 0-6- Frederick (Fred) Lee born 1879 Wellington New Zealand parents Martha & Richard Lee RGO NZ birth 1879/1188
- 0-7- Francis Ernest / Frank Lee born 24 July 1880 Upper Hutt New Zealand parents Martha & 0-8- Richard Lee RGO NZ birth 1880/8036
- 0-9- Arthur Bernice Lee born 29 March 1882 Upper Hutt New Zealand parents Martha & Richard Lee RGO NZ birth 1882/6441
-

Minnie LINSELL foundation pupils

- 0- Frederick Thomas LINSELL born 21 March 1849 Ingrave Essex England died 09 June 1912 Wellington New Zealand married 31 July 1876 Lower Hutt New Zealand Elizabeth GARDNER born 1858 died 06 August 1908 Shannon Manawatu New Zealand
#Frederick Linsell residential Mungaroa dairy farmer 1882-1884 Hutt Electoral Roll
- 0-1- Minnie Elizabeth LINSELL born 06 June 1877 Upper Hutt New Zealand parents Elizabeth & Frederick Thomas Linsell RGO NZ birth 1877/4092
- 0-2- Isabel LINSELL born 24 November 1879 Upper Hutt New Zealand parents Elizabeth & 0-4- Frederick Linsell RGO NZ birth 1879/16991
- 0-3- Ellen LINSELL born 27 May 1881 Mangaroa Upper Hutt New Zealand parents Elizabeth & Frederick Thomas Linsell RGO NZ birth 1881/6778
-

Ellen MITCHELL foundation pupil

Ellen MITCHELL age 5 year 8 months in 1882 perhaps born about 1876
No Trace of Ellen Mitchell & Not Ellen Elizabeth Mitchell born 1876 New Zealand parents Matilda & Henry Mitchell RGO NZ birth 1876/1014

Mary & Sarah ROBINSON foundation pupils

- 0- William ROBINSON born 1848 England died 03 August 1921 Upper Hutt New Zealand married 1874 New Zealand Jane GORRIE born 1849 New Zealand died 1932 New Zealand
#William Robinson freehold Mungaroa farmer Section 147 Mungaroa 1822-1884 Hutt Electoral Roll
- 0-1- Sarah Jane Robinson** born 1875 New Zealand parents Jannet [sic] & William RGO NZ birth 1875/11250
- 0-2- Mary Emma Robinson** born 1877 New Zealand parents Janet & William RGO NZ birth 1877/967
- There are other children for Jane and William Robinson
-

Maggie & Lucy & Elizabeth SCRIMSHAW foundation pupils

- 0- Thomas Alfred SCRIMSHAW born 1845 Lower Hutt New Zealand died 29 December 1909 Pahitua New Zealand married 25 May 1870 Lower Hutt New Zealand Margaret Sarah DONNELLY born 01 January 1854 Lower Hutt New Zealand died 1884 24 February 1884 Wellington New Zealand
#Thomas Scrimshaw residential Upper Hutt labourer 1882-1884 Hutt Electoral Roll
- 0-1- Margaret Sarah (Maggie) Scrimshaw** born 1871 New Zealand parents Margaret & Thomas Alfred Scrimshaw RGO NZ birth 1871/20626
- 0-2- Ellen Louisa Scrimshaw born 1872 New Zealand parents Margaret & Thomas Alfred Scrimshaw RGO NZ birth 1872/21848

0-3- Lucy Anastasia Scrimshaw born 1874 New Zealand parents Margaret & Thomas Alfred Scrimshaw RGO NZ 1874/34325

0-4- Elizabeth Mary Scrimshaw born 1877 New Zealand

0-5- George Patrick Donnelly Scrimshaw born 1878 New Zealand parents Margaret & Thomas Alfred Scrimshaw RGO NZ birth 1878/4233

0-6- Thomas Alfred Hector Scrimshaw born 1880 New Zealand parents Margaret & Thomas Scrimshaw RGO NZ birth 1880/5199

0-7- John Robert Arthur Scrimshaw born 1882 New Zealand

Mary & Thomas & Alice SMITH foundation pupils

0- Richard SMITH born 06 August 1833 Hunstonworth Durham England died 02 May 1903 Masterton New Zealand married 03 October 1867 Wellington New Zealand Mary Jane MONTGOMERY born 20 October 1849 Emu Plains New South Wales Australia died 1924
#Richard Smith residential Upper Hutt labourer 1882-1884 Hutt Electoral Roll & Chairman Hutt County Council 1883

0-1- Walter Smith Montgomery / Smith born 17 July 1867 Wellington New Zealand

0-2- Annas (Alice) Smith born 11 May 1869 Upper Hutt New Zealand parents Mary Jane & Richard RGO NZ birth 1869/19039

0-3- Mary Jane Smith born 24 May 1871 Wainuiomata New Zealand parents Mary Jane & Richard RGO NZ birth 1871/20962

0-4- Thomas Daniel Smith born 10 October 1873 Wainuiomata New Zealand parents Jane & Richard RGO NZ birth 1873/38794

0-5- Alice Matilda Smith born 13 September 1876 Upper Hutt New Zealand parents Mary Jane & Richard RGO NZ birth 1876/14531

0-6- Martha Susannah Smith born 02 May 1882 Mangaroa Upper Hutt New Zealand

Plus others

John WHITEMAN foundation pupil

0- John WHITEMAN born 1850 New Zealand died 1934 New Zealand married 1875 New Zealand Matilda Jane SYMONS born 1860 New Zealand died 1947 New Zealand
#John Whiteman residential freehold Whiteman's Valley sawyer part section 83 & 40 Whiteman's Valley 1882-1884 Hutt Electoral Roll

0-1- John Morsehead Whiteman born 1876 New Zealand parents Matilda Jane & John Whiteman RGO NZ birth 1876/7687

0-2- Matilda Ellen Whiteman born 1878 New Zealand parents Matilda Jane & John Whiteman RGO NZ birth 1878/16105

0-3- Francis Whiteman born 1881 New Zealand parents Matilda Jane & John Whiteman RGO NZ birth 1881/14680

Fredk WOODMASS foundation pupil

0- Robert WOODMASS born 1841 died 12 March 1889 Upper Hutt New Zealand married 1868 New Zealand Ann GARDNER born 1851 died 10 November 1936 Levin New Zealand

#Robert Woodmass Upper Hutt household House and Garden 1878-1879 Hutt Electoral Roll

#Robert Woodmass residential Upper Hutt labourer 1880-1881 & 1890 Hutt Electoral Roll

0-1- George Robert Woodmass born 1869 New Zealand parents Annie & Robert Woodmass RGO NZ birth 1869/18817

0-2- Elizabeth Woodmass born 1871 New Zealand parents Ann & Robert Woodmass RGO NZ birth 1871/20371

0-3- Frederick William Wordmass born 1873 New Zealand parents Annie & Robert Woodmass RGO NZ birth 1873/15147

0-4- Alice Jane Annie Woodmass born 1875 New Zealand parents Annie & Robert Woodmass RGO NZ birth 1875/3462

0-5- John Woodmass born 1878 New Zealand parents Annie & Robert Woodmass RGO NZ birth 1878/1163

0-6- Richard Leonard Woodmass born 1880 New Zealand parents Annie & Robert Woodmass RGO NZ birth 1880/13426

School Pupils - Wallaceville School 1885 - 1896

Burrell	Joseph Burrell	13/5	IV	1885	Wallace / Wallaceville School 10 June 1885
Burrell	Ernest Burrell	12/4	III	1885	Wallace / Wallaceville School 10 June 1885
Burrell	William Burrell	11/2	III	1885	Wallace / Wallaceville School 10 June 1885
Burrell	Edith Burrell	8/2	II	1885	Wallace / Wallaceville School 10 June 1885
Burrell	George Burrell	9/2	II	1885	Wallace / Wallaceville School 10 June 1885
Burrell	Felicia Burrell	8/2	I	1885	Wallace / Wallaceville School 10 June 1885
Burrell	Henry Burrell	6/8	I	1885	Wallace / Wallaceville School 10 June 1885
Cooley	Isaac Cooley	11/5	III	1885	Wallace / Wallaceville School 10 June 1885
Downing	Mabel Downing	8/2	II	1885	Wallace / Wallaceville School 10 June 1885
Langdon	Rose Langdon	11/2	II	1885	Wallace / Wallaceville School 10 June 1885
Langdon	George Langdon	7/3	I	1885	Wallace / Wallaceville School 10 June 1885
Last	Frederick Last	8/2	I	1885	Wallace / Wallaceville School 10 June 1885
Lee	Clara Lee	9/12	II	1885	Wallace / Wallaceville School 10 June 1885
Lee	Frederick Lee	6/5	I	1885	Wallace / Wallaceville School 10 June 1885
Linsell	Minnie Linsell	8/2	II	1885	Wallace / Wallaceville School 10 June 1885
Lowe	Etty Lowe	10/6	III	1885	Wallace / Wallaceville School 10 June 1885
Lowe	John Lowe	6/2	I	1885	Wallace / Wallaceville School 10 June 1885
Mitchell	Margaret Mitchell	8/2	II	1885	Wallace / Wallaceville School 10 June 1885
Preston	Hughes Preston	11/3	IV	1885	Wallace / Wallaceville School 10 June 1885
Robinson	Sarah Robinson	10/5	III	1885	Wallace / Wallaceville School 10 June 1885
Robinson	Mary Robinson	8/2	II	1885	Wallace / Wallaceville School 10 June 1885
Smith	Thomas Smith	11/2	II	1885	Wallace / Wallaceville School 10 June 1885
Whiteman	John Whiteman	8/6	III	1885	Wallace / Wallaceville School 10 June 1885

(Reference Archives NZ Wellington Class schedules 1885 A-Z reference ADEX 16412 EB-W8 1/1 = The Education Board of the District of Wellington Inspectors Annual Return year ending last day of School Examination 1885 - Teacher Lct. Treadwell age 19 years 9 months appointed 1 years 52 days teacher for 4¼ years position HM - School 20 feet by 16 feet residence 2 rooms etc. - Total pupils 37 = boys 19 girls 18 - Wallace / Wallaceville School 10 June 1885 inspector Robert Lee)

Burrell	Joseph Burrell	14/6	IV	1886	Wallaceville Valley School 19 March 1886
Burrell	Ernest Burrell	13/4	III	1886	Wallaceville Valley School 19 March 1886
Burrell	William Burrell	12/1	III	1886	Wallaceville Valley School 19 March 1886
Burrell	George Burrell	10/6	III	1886	Wallaceville Valley School 19 March 1886
Burrell	Edith Burrell	10/0	II	1886	Wallaceville Valley School 19 March 1886
Burrell	Felicia Burrell	10/5	II	1886	Wallaceville Valley School 19 March 1886
Burrell	Henry Burrell	7/7	I	1886	Wallaceville Valley School 19 March 1886
Burrell	Tom Burrell	5/6	P1-2	1886	Wallaceville Valley School 19 March 1886
Burrell	Constance Burrell	7/4	P1-2	1886	Wallaceville Valley School 19 March 1886

Cooley	Isaac Cooley	12/6	III	1886	Wallaceville Valley School 19 March 1886
Cooley	Ethel Cooley	9/0	I	1886	Wallaceville Valley School 19 March 1886
Cooley	Albert Cooley	5/9	P1-2	1886	Wallaceville Valley School 19 March 1886
Downing	Mabel Downing	9/1	II	1886	Wallaceville Valley School 19 March 1886
Downing	John Downing	5/11	P1-2	1886	Wallaceville Valley School 19 March 1886
Downing	Lucy Downing	5/3	P1-2	1886	Wallaceville Valley School 19 March 1886
Gorrie	William Gorrie	6/0	P1-2	1886	Wallaceville Valley School 19 March 1886
Last	Frederick Last	9/1	II	1886	Wallaceville Valley School 19 March 1886
Lee	Clara Lee	10/1	III	1886	Wallaceville Valley School 19 March 1886
Lee	Frederick Lee	7/1	I	1886	Wallaceville Valley School 19 March 1886
Lee	Frank Lee	5/11	P1-2	1886	Wallaceville Valley School 19 March 1886
Linsell	Minnie Linsell	9/0	II	1886	Wallaceville Valley School 19 March 1886
Linsill	Isabel Linsill	6/4	P1-2	1886	Wallaceville Valley School 19 March 1886
Lowe	Etty Lowe	11/7	III	1886	Wallaceville Valley School 19 March 1886
Lowe	John Lowe	8/1	I	1886	Wallaceville Valley School 19 March 1886
Lowe	James Lowe	5/10	P1-2	1886	Wallaceville Valley School 19 March 1886
Lowe	Samuel Lowe	5/10	P1-2	1886	Wallaceville Valley School 19 March 1886
Preston	Hughes Preston	12/7	V	1886	Wallaceville Valley School 19 March 1886
Ridland	Margaret Ridland	9/1	III	1886	Wallaceville Valley School 19 March 1886
Robinson	Sarah Robinson	11/0	III	1886	Wallaceville Valley School 19 March 1886
Robinson	Mary Robinson	9/6	II	1886	Wallaceville Valley School 19 March 1886
Robinson	John Robinson	6/5	P1-2	1886	Wallaceville Valley School 19 March 1886
Whiteman	John Whiteman	9/0	III	1886	Wallaceville Valley School 19 March 1886
Whiteman	Edward Whiteman	5/0	P1-2	1886	Wallaceville Valley School 19 March 1886
Whiteman	Frank Whiteman	5/0	P1-2	1886	Wallaceville Valley School 19 March 1886
Whiteman	Matilda Whiteman	6/9	P1-2	1886	Wallaceville Valley School 19 March 1886

(Reference Archives NZ Wellington Class schedules 1886 A-Z reference ADEX 16412 EB-W8 ½ = The Education Board of the District of Wellington Inspectors Annual Return year ending last day of School Examination 1886 - Wallaceville Valley School 19 March 1886 inspector Robert Lee)

Burrell	William Burrell	13/0	IV	1887	Wallaceville School 04 May 1887
Burrell	George Burrell	11/4	IV	1887	Wallaceville School 04 May 1887
Burrell	Edith Burrell	10/3	III	1887	Wallaceville School 04 May 1887
Burrell	Felicia Burrell	11/11	II	1887	Wallaceville School 04 May 1887
Burrell	Henry Burrell	8/4	II	1887	Wallaceville School 04 May 1887
Burrell	Constance Burrell	8/5	I	1887	Wallaceville School 04 May 1887
Burrell	Henry Burrell	8/4	X out	1887	Wallaceville School 04 May 1887
Burrell	Tom Burrell	6/7	PI & PII	1887	Wallaceville School 04 May 1887

Cooley	Albert Cooley	0/0	PI & PII	1887	Wallaceville School 04 May 1887
Cooly	Ethel Cooly	9/10	II	1887	Wallaceville School 04 May 1887
Downing	Mabel Downing	9/11	III	1887	Wallaceville School 04 May 1887
Downing	John Downing	0/0	PI & PII	1887	Wallaceville School 04 May 1887
Downing	Lucy Downing	?/10	PI & PII	1887	Wallaceville School 04 May 1887
Gorrie	William Gorrie	0/0	PI & PII	1887	Wallaceville School 04 May 1887
Hughes	Preston Hughes	13/5	V	1887	Wallaceville School 04 May 1887
Last	Frederick Last	10/0	II	1887	Wallaceville School 04 May 1887
Lee	Clara Lee	11/0	IV	1887	Wallaceville School 04 May 1887
Lee	Frederick Lee	8/0	II	1887	Wallaceville School 04 May 1887
Lee	Frederick Lee	8/0	X out	1887	Wallaceville School 04 May 1887
Lindell	Ellen Lindell	5/10	PI & PII	1887	Wallaceville School 04 May 1887
Linsell	Minnie Linsell	9/10	III	1887	Wallaceville School 04 May 1887
Linsell	Isabel Linsell	7/6	I	1887	Wallaceville School 04 May 1887
Lowe	John Lowe	9/0	II	1887	Wallaceville School 04 May 1887
Lowe	John Lowe	9/0	X out	1887	Wallaceville School 04 May 1887
Lowe	James Lowe	6/11	PI & PII	1887	Wallaceville School 04 May 1887
Lowe	Samuel Lowe	5/4	PI & PII	1887	Wallaceville School 04 May 1887
Ridland	Margaret Ridland	9/1	IV	1887	Wallaceville School 04 May 1887
Robinson	Sarah Robinson	11/11	IV	1887	Wallaceville School 04 May 1887
Robinson	Mary Robinson	10/4	III	1887	Wallaceville School 04 May 1887
Robinson	John Robinson	?/6	I	1887	Wallaceville School 04 May 1887
Robinson	Matilda Robinson	5/0	PI & PII	1887	Wallaceville School 04 May 1887
Whiteman	John Whiteman	10/10	IV	1887	Wallaceville School 04 May 1887
Whiteman	Matilda Whiteman	?/10	I	1887	Wallaceville School 04 May 1887
Whiteman	Edwards Whiteman	0/0	PI & PII	1887	Wallaceville School 04 May 1887
Whiteman	Frank Whiteman	5/10	PI & PII	1887	Wallaceville School 04 May 1887

(Reference Archives NZ Wellington Class schedules 1887 A-Z reference ADEX 16412 EB-W8 2 3 = The Education Board of the District of Wellington Inspectors Annual Return year ending last day of School Examination 1887 - Wallaceville School 04 May 1887 - Inspector Robert Lee)

Burrell	George Burrell	13/4	IV	1888	Wallaceville School 29 May 1888
Burrell	Edith Burrell	11/4	III	1888	Wallaceville School 29 May 1888
Burrell	Felicia Burrell	11/10	III	1888	Wallaceville School 29 May 1888
Burrell	George Burrell	13/4	III	1888	Wallaceville School 29 May 1888
Burrell	Henry Burrell	9/5	II	1888	Wallaceville School 29 May 1888
Burrell	Constance Burrell	9/6	II	1888	Wallaceville School 29 May 1888
Burrell	Tom Burrell	7/4	I	1888	Wallaceville School 29 May 1888

Cooley	Ethel Cooley	12/2	II	1888	Wallaceville School 29 May 1888
Cooley	Albert Cooley	8/3	I	1888	Wallaceville School 29 May 1888
Downing	Mabel Downing	10/11	IV	1888	Wallaceville School 29 May 1888
Downing	John Downing	8/10	I	1888	Wallaceville School 29 May 1888
Downing	Lucy Downing	6/8	PII	1888	Wallaceville School 29 May 1888
Edwards	Alfred Edwards	10/8	II	1888	Wallaceville School 29 May 1888
Edwards	Bertha Edwards	7/11	P2	1888	Wallaceville School 29 May 1888
Last	Frederick Last	11/0	III	1888	Wallaceville School 29 May 1888
Lee	Frederick Lee	9/7	II	1888	Wallaceville School 29 May 1888
Lee	Arthur Lee	6/0	PI	1888	Wallaceville School 29 May 1888
Lensell	Ellen Lensell	6/11	PII	1888	Wallaceville School 29 May 1888
Linsell	Ninnie Linsell	10/11	IV	1888	Wallaceville School 29 May 1888
Linsell	Isabel Linsell	8/6	II	1888	Wallaceville School 29 May 1888
Ridland	Margaret Ridland	10/4	V	1888	Wallaceville School 29 May 1888
Robinson	Sarah Robinson	12/10	IV	1888	Wallaceville School 29 May 1888
Robinson	Mary Robinson	11/5	IV	1888	Wallaceville School 29 May 1888
Robinson	John Robinson	9/6	II	1888	Wallaceville School 29 May 1888
Robinson	Matilda Robinson	6/0	PI	1888	Wallaceville School 29 May 1888
Smith	Alice Smith	11/8	III	1888	Wallaceville School 29 May 1888
Whiteman	John Whiteman	11/6	V	1888	Wallaceville School 29 May 1888
Whiteman	Matilda Whiteman	9/6	II	1888	Wallaceville School 29 May 1888
Whiteman	Edward Whiteman	8/2	I	1888	Wallaceville School 29 May 1888
Whiteman	Annie Whiteman	9/11	I	1888	Wallaceville School 29 May 1888
Whiteman	Edward Whiteman	7/11	PII	1888	Wallaceville School 29 May 1888
Whiteman	Henry Whiteman	6/3	PI	1888	Wallaceville School 29 May 1888
Whiteman	Emma Whiteman	6/6	PI	1888	Wallaceville School 29 May 1888

(Reference Archives NZ Wellington Class schedules 1888 N-Z reference ADEX 16412 EB-W3 5 = The Education Board of the District of Wellington Inspectors Annual Return year ending last day of School Examination 1888 - Wallaceville School 29 May 1888 Inspector Robert Lee)

Burrell	George Burrell	14/7	IV	1889	Wallaceville School 23 May 1889
Burrell	Henry Burrell	10/8	III	1889	Wallaceville School 23 May 1889
Burrell	Felicia Burrell	13/2	III	1889	Wallaceville School 23 May 1889
Burrell	Tom Burrell	8/7	II	1889	Wallaceville School 23 May 1889
Burrell	Catherine Burrell	6/6	PII	1889	Wallaceville School 23 May 1889
Cooley	Ethel Cooley	5/11	III	1889	Wallaceville School 23 May 1889
Cooley	Albert Cooley	9/6	II	1889	Wallaceville School 23 May 1889
Downing	Mabel Downing	12/0	V	1889	Wallaceville School 23 May 1889

Downing	John Downing	9/11	II	1889	Wallaceville School 23 May 1889
Downing	Lucy Downing	7/11	I	1889	Wallaceville School 23 May 1889
Downing	Charity Downing	6/5	PII	1889	Wallaceville School 23 May 1889
Edwards	Percy Edwards	12/5	V	1889	Wallaceville School 23 May 1889
Edwards	Henry Edwards	11/0	III	1889	Wallaceville School 23 May 1889
Edwards	Alfred Edwards	10/11	III	1889	Wallaceville School 23 May 1889
Edwards	Ada Edwards	8/6	II	1889	Wallaceville School 23 May 1889
Edwards	Bertha Edwards	9/2	I	1889	Wallaceville School 23 May 1889
Edwards	Herbert Edwards	8/3	PII	1889	Wallaceville School 23 May 1889
Lee	Clara Lee	13/0	V	1889	Wallaceville School 23 May 1889
Lee	Frederick Lee	10/10	III	1889	Wallaceville School 23 May 1889
Lee	Frank Lee	9/0	I	1889	Wallaceville School 23 May 1889
Lee	Arthur Lee	7/3	PII	1889	Wallaceville School 23 May 1889
Linsell	Minnie Linsell	12/0	V	1889	Wallaceville School 23 May 1889
Linsell	Isabel Linsell	9/11	III	1889	Wallaceville School 23 May 1889
Linsell	Ellen Linsell	8/2	I	1889	Wallaceville School 23 May 1889
Preston	Hughes Preston	15/6	VII	1889	Wallaceville School 23 May 1889
Ridland	Margaret Ridland	12/0	V	1889	Wallaceville School 23 May 1889
Whiteman	John Whiteman	12/6	VI	1889	Wallaceville School 23 May 1889
Whiteman	Matilda Whiteman	10/9	III	1889	Wallaceville School 23 May 1889
Whiteman	Edward Whiteman	9/5	II	1889	Wallaceville School 23 May 1889
Whiteman	Frank Whiteman	8/1	I	1889	Wallaceville School 23 May 1889
Whiteman	Annie Whiteman	12/2	I	1889	Wallaceville School 23 May 1889
Whiteman	Henry Whiteman	7/6	PI	1889	Wallaceville School 23 May 1889
Whiteman	Emma Whiteman	7/6	PI	1889	Wallaceville School 23 May 1889

(Reference Archives NZ Wellington Class schedules 1889 M-Z reference ADEX 16412 EB-W3 7 New Zealand Education Department Examination schedule 1889 - Wallaceville School 23 May 1889 Inspector Robert Lee)

Burrell	Henry Burrell	12/5	IV	1891	Wallaceville School 20 May 1891
Burrell	Constance Burrell	11/10	III	1891	Wallaceville School 20 May 1891
Burrell	Tom Burrell	10/5	II	1891	Wallaceville School 20 May 1891
Burrell	Catherine Burrell	8/4	P2	1891	Wallaceville School 20 May 1891
Burrell	Emma Burrell	8/0	PI	1891	Wallaceville School 20 May 1891
Cooley	Albert Cooley	11/4	III	1891	Wallaceville School 20 May 1891
Downing	John Downing	11/11	III	1891	Wallaceville School 20 May 1891
Downing	Lucy Downing	9/9	III	1891	Wallaceville School 20 May 1891
Downing	Charity Downing	7/5	P2	1891	Wallaceville School 20 May 1891

Edwards	Percy Edwards	14/4	VI	1891	Wallaceville School 20 May 1891
Edwards	Henry Edward	12/5	V	1891	Wallaceville School 20 May 1891
Edwards	Alfred Edwards	13/7	IV	1891	Wallaceville School 20 May 1891
Edwards	Ada Edwards	9/5	III	1891	Wallaceville School 20 May 1891
Edwards	Bertha Edwards	11/10	II	1891	Wallaceville School 20 May 1891
Edwards	George Edwards	6/6	P2	1891	Wallaceville School 20 May 1891
Edwards	Herbert Edwards	10/0	P2	1891	Wallaceville School 20 May 1891
Lee	Francis Lee	11/0	III	1891	Wallaceville School 20 May 1891
Lee	Arthur Lee	9/0	P2	1891	Wallaceville School 20 May 1891
Linsell	Minnie Linsell	13/11	VII	1891	Wallaceville School 20 May 1891
Linsell	Isabel Linsell	11/6	V	1891	Wallaceville School 20 May 1891
Linsell	Ellen Linsell	9/10	III	1891	Wallaceville School 20 May 1891
Linsell	Frederick Linsell	6/8	P2	1891	Wallaceville School 20 May 1891
Ridland	Margaret Ridland	13/11	VII	1891	Wallaceville School 20 May 1891
Scott	Francis Scott	13/0	V	1891	Wallaceville School 20 May 1891
Thomas	Ernest Thomas	10/10	II	1891	Wallaceville School 20 May 1891
Whiteman	Matilda Whiteman	12/7	V	1891	Wallaceville School 20 May 1891
Whiteman	Edward Whiteman	11/4	III	1891	Wallaceville School 20 May 1891
Whiteman	Frank Whiteman	10/0	III	1891	Wallaceville School 20 May 1891
Whiteman	Henry E Whiteman	9/5	III	1891	Wallaceville School 20 May 1891
Whiteman	Annie Whiteman	13/0	III	1891	Wallaceville School 20 May 1891
Whiteman	Henry Whiteman	9/6	II	1891	Wallaceville School 20 May 1891
Whiteman	Emma Whiteman	9/5	II	1891	Wallaceville School 20 May 1891
Whiteman	Fred Whiteman	7/0	P2	1891	Wallaceville School 20 May 1891
Whiteman	Francis Whiteman	5/8	PI	1891	Wallaceville School 20 May 1891
Whiteman	Mary Whiteman	6/6	PI	1891	Wallaceville School 20 May 1891

(Reference Archives NZ Wellington Class schedules 1891 M-W reference ADEX 16412 EB-W8 5 11 New Zealand Education Department Examination schedule 1891 - Wallaceville School 20 May 1891 Inspector T R Fleming)

Burrell	Henry Burrell	14/6	V	1893	Wallaceville School 29 May 1893
Burrell	Tom Burrell	12/5	IV	1893	Wallaceville School 29 May 1893
Burrell	Thomas Burrell	11/0	IV	1893	Wallaceville School 29 May 1893
Burrell	Catherine Burrell	10/5	II	1893	Wallaceville School 29 May 1893
Burrell	Francis Burrell	7/6	P2	1893	Wallaceville School 29 May 1893
Burrell	Emma Burrell	9/11	P2	1893	Wallaceville School 29 May 1893
Burrell	Aaron Burrell	5/7	PI	1893	Wallaceville School 29 May 1893
Dick	Dan Dick	5/3	PI	1893	Wallaceville School 29 May 1893

Downing	John Downing	13/11	V	1893	Wallaceville School 29 May 1893
Downing	Lucy Downing	11/5	V	1893	Wallaceville School 29 May 1893
Downing	Charity Downing	9/4	II	1893	Wallaceville School 29 May 1893
Edwards	Ada Edwards	11/9	V	1893	Wallaceville School 29 May 1893
Edwards	George Edwards	11/6	II	1893	Wallaceville School 29 May 1893
Edwards	Jane Edwards	5/9	PI	1893	Wallaceville School 29 May 1893
Elliott	Annie Elliott	5/2	PI	1893	Wallaceville School 29 May 1893
Gorrie	James Gorrie	12/8	III	1893	Wallaceville School 29 May 1893
Gorrie	William Gorrie	13/4	III	1893	Wallaceville School 29 May 1893
Gorrie	John Gorrie	11/7	II	1893	Wallaceville School 29 May 1893
Gorrie	Alexander Gorrie	5/4	PI	1893	Wallaceville School 29 May 1893
Lee	Frederick Lee	14/7	IV	1893	Wallaceville School 29 May 1893
Lee	Francis Lee	13/0	III	1893	Wallaceville School 29 May 1893
Lee	Arthur Lee	11/0	II	1893	Wallaceville School 29 May 1893
Pearsen	Mary Pearsen	8/8	PII	1893	Wallaceville School 29 May 1893
Scott	Francis Scott	15/0	VI	1893	Wallaceville School 29 May 1893
Whiteman	Edward Whiteman	13/4	IV	1893	Wallaceville School 29 May 1893
Whiteman	Henry Whiteman	11/4	III	1893	Wallaceville School 29 May 1893
Whiteman	Alfred Whiteman	10/0	III	1893	Wallaceville School 29 May 1893
Whiteman	Emma Whiteman	11/4	III	1893	Wallaceville School 29 May 1893
Whiteman	Mary Whiteman	8/6	P2	1893	Wallaceville School 29 May 1893
Whiteman	Robert Whiteman	6/7	PI	1893	Wallaceville School 29 May 1893
Wood	Arthur Wood	5/7	PI	1893	Wallaceville School 29 May 1893

(Reference Archives New Zealand Wellington Office ADEX 16412 EB-W8 8/16Class schedules M-W 1893 - Wallaceville School 29 May 1893 Inspector Robert Lee - Teacher = S Elkin age 33 (3 years 10 months at School) other details recorded)

Burrell	Tom S Burrell	14/5	VI	1895	Wallaceville School 10 June 1895
Burrell	Thomas Burrell	13/8	VI	1895	Wallaceville School 10 June 1895
Burrell	Catherine Burrell	12/5	IV	1895	Wallaceville School 10 June 1895
Burrell	Emma Burrell	11/1	II	1895	Wallaceville School 10 June 1895
Burrell	Frank Burrell	9/6	I	1895	Wallaceville School 10 June 1895
Burrell	Aaron Burrell	7/7	P2	1895	Wallaceville School 10 June 1895
Clifford	Freda Clifford	7/6	I	1895	Wallaceville School 10 June 1895
Clifford	Stanley Clifford	6/4	P1	1895	Wallaceville School 10 June 1895
Downing	Charity Downing	11/4	IV	1895	Wallaceville School 10 June 1895
Edward	George Edward	11/6	IV	1895	Wallaceville School 10 June 1895
Edward	Herbert Edward	14/0	III	1895	Wallaceville School 10 June 1895

Edward	Jane Edward	7/8	P2	1895	Wallaceville School 10 June 1895
Edwards	Alvenia Edwards	8/0	P2	1895	Wallaceville School 10 June 1895
Edwards	Jane Blanche Edwards	5/8	P1	1895	Wallaceville School 10 June 1895
Gorrie	James Gorrie	14/9	V	1895	Wallaceville School 10 June 1895
Gorrie	William Gorrie	15/4	IV	1895	Wallaceville School 10 June 1895
Gorrie	John Gorrie	13/7	III	1895	Wallaceville School 10 June 1895
Gorrie	Alexander Gorrie	7/4	P1	1895	Wallaceville School 10 June 1895
Gorrie	Henry Gorrie	6/2	P1	1895	Wallaceville School 10 June 1895
Hughes	Annie Hughes	10/3	III	1895	Wallaceville School 10 June 1895
Lee	Arthur Lee	13/0	IV	1895	Wallaceville School 10 June 1895
Robinson	Oliver Robinson	11/0	III	1895	Wallaceville School 10 June 1895
Whiteman	Henry Whiteman	13/6	V	1895	Wallaceville School 10 June 1895
Whiteman	Alfred Whiteman	12/0	IV	1895	Wallaceville School 10 June 1895
Whiteman	Mary Whiteman	10/6	II	1895	Wallaceville School 10 June 1895
Whiteman	Hannah Whiteman	10/0	II	1895	Wallaceville School 10 June 1895
Whiteman	James Whiteman	9/2	I	1895	Wallaceville School 10 June 1895
Whiteman	Robert Whiteman	8/7	P2	1895	Wallaceville School 10 June 1895
Whiteman	Ellen Whiteman	8/0	P2	1895	Wallaceville School 10 June 1895
Whiteman	Thomas Whiteman	5/2	P1	1895	Wallaceville School 10 June 1895

(Reference Archives New Zealand Wellington Office ADEX 16412 EB-W8 11/22 Class schedules P-W 1895 - Wallaceville School 10 June 1895 Robert Lee Inspector Teacher S Elkin 6 years at school)

Burrell	Thomas Burrell	14/8	VII	1896	Wallaceville School date 01 June 1896
Burrell	Tom Samuel Burrell	15/6	VI	1896	Wallaceville School date 01 June 1896
Burrell	Catherine Burrell	13/5	V	1896	Wallaceville School date 01 June 1896
Burrell	Emma Burrell	12/0	III	1896	Wallaceville School date 01 June 1896
Burrell	Frank Burrell	10/6	II	1896	Wallaceville School date 01 June 1896
Burrell	Aaron Burrell	8/9	I	1896	Wallaceville School date 01 June 1896
Clifford	Freda Clifford	8/11	II	1896	Wallaceville School date 01 June 1896
Clifford	Stanley Clifford	7/3	I	1896	Wallaceville School date 01 June 1896
Clifford	Olive Clifford	5/9	P1	1896	Wallaceville School date 01 June 1896
Downing	Charity Downing	12/3	V	1896	Wallaceville School date 01 June 1896
Edwards	George Edwards	12/6	V	1896	Wallaceville School date 01 June 1896
Edwards	Alvenia Edwards	10/3	I	1896	Wallaceville School date 01 June 1896
Edwards	Jane Edwards	8/8	I	1896	Wallaceville School date 01 June 1896
Edwards	Blanche Edwards	8/8	P1	1896	Wallaceville School date 01 June 1896
Gorrie	James Gorrie	15/9	V	1896	Wallaceville School date 01 June 1896

Gorrie	John Gorrie	14/7	IV	1896	Wallaceville School date 01 June 1896
Gorrie	Alexander Gorrie	8/8	I	1896	Wallaceville School date 01 June 1896
Gorrie	Henry Gorrie	7/0	P1	1896	Wallaceville School date 01 June 1896
Hughes	Annie Hughes	11/2	III	1896	Wallaceville School date 01 June 1896
Lee	Arthur Lee	14/1	IV	1896	Wallaceville School date 01 June 1896
Robinson	Oliver Robinson	12/0	IV	1896	Wallaceville School date 01 June 1896
Scholes	Ralph Scholes	5/8	P1	1896	Wallaceville School date 01 June 1896
Walker	Robert Walker	7/1	P1	1896	Wallaceville School date 01 June 1896
Whiteman	Alfred Whiteman	14/0	V	1896	Wallaceville School date 01 June 1896
Whiteman	Mary Whiteman	12/0	III	1896	Wallaceville School date 01 June 1896
Whiteman	Hannah Whiteman	11/9	III	1896	Wallaceville School date 01 June 1896
Whiteman	Robert Whiteman	9/7	I	1896	Wallaceville School date 01 June 1896
Whiteman	Nellie Whiteman	9/9	I	1896	Wallaceville School date 01 June 1896
Whiteman	Thomas Whiteman	7/0	P1	1896	Wallaceville School date 01 June 1896
Whiteman	Alex Whiteman	5/4	P1	1896	Wallaceville School date 01 June 1896

(Reference Archives NZ Wellington Office ADEX 16412 EB-W8 12 24/25/26 Class schedules H-O & M-S (refer R11820657) & T-W (refer R11820657) 1896 - Wallaceville School date 01 June 1896 Inspector Robert Lee)

Alexander	Henry Alexander			1907	Age 14 years 9 months Wallaceville School 14 May 1907
Alexander	Henry Alexander			1907	Age 15 years 4 months Wallaceville School 14 May 1907
August	Clarence August			1907	Age 11 years 3 months Wallaceville School 14 May 1907
Cassey	Lilly Cassey			1907	Age 13 years 7 months Kaitoke School 10 May 1907
Cassey	Herbert Cassey			1907	Age 7 years 10 months Kaitoke School 10 May 1907
Clifford	Ivy Clifford			1907	Age 11 years 8 months Wallaceville School 14 May 1907
Clifford	Isabella Clifford			1907	Age 12 years 7 months Wallaceville School 14 May 1907
Downing	Godfrey Dowing			1907	Age 9 years 7 months Wallaceville School 14 May 1907
Mitchell	Elsie Mitchell			1907	Age 6 years 1 month Wallaceville School 14 May 1907
Mitchell	Nellie Mitchell			1907	Age 7 years 3 months Wallaceville School 14 May 1907
Mitchell	Clarence Mitchell			1907	Age 8 years 10 months Wallaceville School 14 May 1907
Scholes	Frank Scholes			1907	Age 11 years 7 months Wallaceville School 14 May 1907
Scholes	Matilda Scholes			1907	Age 13 years 2 months Wallaceville School 14 May 1907
Scholes	Alexander Scholes			1907	Age 7 years 9 months Wallaceville School 14 May 1907
Scholes	Hannah Scholes			1907	Age 9 years 7 months Wallaceville School 14 May 1907
Sherlock	William Sherlock			1907	Age 10 years 7 months Wallaceville School 14 May 1907
Sherlock	John Sherlock			1907	Age 11 years 10 months Wallaceville School 14 May 1907
Sherlock	Thomas Sherlock			1907	Age 7 years 3 months Wallaceville School 14 May 1907
Walker	William Walker			1907	Age 6 years Wallaceville School 14 May 1907

Whiteman	Marcia A Whiteman			1907	Age 10 years 1 month Wallaceville School 14 May 1907
Whiteman	Dorothy Whiteman			1907	Age 10 years 3 months Wallaceville School 14 May 1907
Whiteman	Maurice Whiteman			1907	Age 12 years 6 months Wallaceville School 14 May 1907
Whiteman	Ruth Whiteman			1907	Age 12 years 8 months Wallaceville School 14 May 1907
Whiteman	Laura Whiteman			1907	Age 6 years 10 months Wallaceville School 14 May 1907
Whiteman	Edward Whiteman			1907	Age 7 years Wallaceville School 14 May 1907
Duncan	Annie Duncan			1907	Wallaceville School Teacher

(Reference Archives New Zealand Wellington Office - 1907=Class schedules U-Private School Inspectors ADEX 16412 EB-W8 34/83 - Wallaceville School 14 May 1907 Annie Duncan head teacher)

Wallaceville School – Miscellaneous Information

The Cyclopedia of New Zealand 1897

- Wallaceville Public School is located at the head of the Mungaroa Valley. It is a wooden building of the usual design having one room and a vestibule in addition to two rooms for the teacher's residence. This school has been established for over fourteen year there are thirty children on the roll divided between the whole of the standards the average attendance being twenty five.
- Miss Sarah Elkin who was charge of the Wallaceville School is a native of Ireland which she left at an early age with her parents on their emigration to Australia. Miss Elkin commenced her education in Australia continuing her studies in Taranaki whither her parents had removed. In 1880 she became teacher her first school being at Koru, Taranaki. After two years she entered the Wellington Training College and remained till 1885 then obtaining her first certificate which has since been increased to E1. Miss Elkin was mistress of the Koro Koro School near Petone for four years and received her present appointment in 1889.

(Reference NZETC website 1897 The Cyclopedia of New Zealand Upper Hutt and Surrounding Districts page 844)

Upper Hutt City Library Heritage collection

- Archives 1 items
- Audio 2 items
- Ephemera 1 item
- Manuscript 31 items
- Organisation 1 item
- Photos 23 items
- Place 1 item
- Publication 100 items
- Index of Wallaceville, Kaitoke and Mangaroa School Pupils 1885-1900 reference 118
- Wallaceville School Inspectors Returns 1890-1900 (originals held at Archives NZ Wellington reference EB-WB/41 School Inspectors Reports) reference 118/1
- Various articles and photographs from Upper Hutt Leader, Yvonne Airey and Wilfred Jackson

Upper Hutt City Library Heritage collection

[a] = Upper Hutt City Library Heritage collection Location 11a subject Wallaceville Attendance Registers January 1882 to December 1925 & Examination Register 1933 to 1937 [New Zealand Public School Register of Daily Attendance issued by authority under The Education Act 1877 Section 100 – This register is the Property of the Committee of the School District in which it is issued – Wallace/Wallaceville Public School - Class – Teacher – Register of Attendance from to (for Instructions see last page of Cover – By Authority George Didsbury Government Printer Wellington] - UHCC Library Heritage collection Location 11a

[b] = Recollect website under subjects Archives & Manuscripts scanned but with no heritage collection location references

- [b] Wallace School & Wallaceville School Inspectors Returns 1890-1900 – [index compiled by members of the New Zealand Society of Genealogists from the following records Wallaceville School Inspectors Returns 1890-1900 originals in Archives NZ Wellington Office] typed document – recollect scanned with reference archives 188/1 also 118 shelf location 12e
- [a] January 1882 to 29 September 1882 Teacher Edward FODEN Register of Daily Attendance – UHCC Library Heritage collection Location 11a
- [b] Wallace (Wallaceville) School Attendance Register January – September 1882 – teacher Edward Foden – no reference source on recollect but scanned
- [a] 01 July 1885 to 18 December 1885 Teacher L A Treadwell Register of Daily Attendance – UHCC Library Heritage collection Location 11a
- [b] Wallaceville School Attendance Register July – December 1885 – teacher L A Treadwell – no reference source on recollect but scanned

- [a] July 1895 to December 1895 Teacher S ELKIN Register of Daily Attendance – UHCC Library Heritage collection Location 11a
- [a] January 1897 to June 1897 Teacher S ELKIN Register of Daily Attendance – UHCC Library Heritage collection Location 11a
- [b] Wallaceville School Attendance Register January – June 1897 – teacher S Elkin – no reference source on recollect but scanned
- [a] 12 July 1897 to December 1897 Teacher S ELKIN Register of Daily Attendance – UHCC Library Heritage collection Location 11a
- [b] Wallaceville School Attendance Register January – June 1897 – teacher S Elkin – no reference source on recollect but scanned
- [a] January 1898 to June 1898 Teacher S ELKIN Register of Daily Attendance – UHCC Library Heritage collection Location 11a
- [a] 01 July 1898 to December 1898 Teacher S ELKIN Register of Daily Attendance – UHCC Library Heritage collection Location 11a
- [a] 24 January 1899 to 30 June 1899 Teacher S ELKIN Register of Daily Attendance – UHCC Library Heritage collection Location 11a
- [a] July 1899 to December 1899 Teacher S ELKIN Register of Daily Attendance – UHCC Library Heritage collection Location 11a
- [b] Wallaceville School Attendance Register July – December 1899 – teacher S Elkin – no reference source on recollect but scanned
- [a] January 1900 to June 1900 Teacher S ELKIN Register of Daily Attendance – UHCC Library Heritage collection Location 11a
- [b] Wallaceville School Attendance Register January – June 1900 – teacher S Elkin – no reference source on recollect but scanned
- [a] July 1900 to December 1900 Teacher blank (perhaps S ELKIN) Register of Daily Attendance – UHCC Library Heritage collection Location 11a
- [a] 28 January 1901 to 30 June 1901 Teacher S ELKIN Register of Daily Attendance – UHCC Library Heritage collection Location 11a
- [a] 01 July 1901 to 20 December 1901 Teacher blank (noted in November “school closed Teacher leaving”) Register of Daily Attendance – UHCC Library Heritage collection Location 11a
- [a] 27 January 1902 to June 1902 Teacher B C ALDRICK Register of Daily Attendance – UHCC Library Heritage collection Location 11a
- [a] July 1902 to December 1902 Teacher B C ALDRICK Register of Daily Attendance – UHCC Library Heritage collection Location 11a
- [a] July 1903 to December 1903 Teacher B C ALDRICK Register of Daily Attendance – UHCC Library Heritage collection Location 11a
- [a] January 1904 to June 1904 Teacher B C ALDRICK Register of Daily Attendance – UHCC Library Heritage collection Location 11a
- [b] Wallaceville School Attendance Register January – June 1904 – teacher B C Aldrick 0 no reference source on recollect but scanned
- [a] July 1905 to 31st December 1905 Teacher A DUNCAN Register of Daily Attendance – UHCC Library Heritage collection Location 11a
- [b] Wallaceville School Attendance Register July – December 1905 – Teacher not recorded - no reference source on recollect but scanned
- [a] 01 January 1908 to June 1908 Teacher Ann_ [sic] BRIGHT Register of Daily Attendance – UHCC Library Heritage collection Location 11a
- [b] Wallaceville School Attendance Register January – June 1908 – teacher not recorded – no reference source on recollect but scanned
- [a] January 1910 to June 1910 Teacher A BRIGHT Register of Daily Attendance – UHCC Library Heritage collection Location 11a
- [b] Wallaceville School Attendance Register January – June 1910 – teacher not recorded – no reference source on recollect but scanned
- [a] January 1912 to June 1912 Teacher F THOMSON Register of Daily Attendance – UHCC Library Heritage collection Location 11a

- [b] Wallaceville School Attendance Register January – June 1912 – teacher L Thomson – no reference source on recollect but scanned
- [a] 30 June 1912 to 31 December 1912 Teacher F THOMSON Register of Daily Attendance – UHCC Library Heritage collection Location 11a
- [a] January 1914 to December 1914 Teacher E M JOHNSON Register of Daily Attendance – UHCC Library Heritage collection Location 11a
- [b] Wallaceville School Attendance Register January – December 1914 – teacher not recorded – no reference source on recollect
- [a] 04 February 1919 to December 1919 Teacher Edith M JOHNSON Register of Daily Attendance – UHCC Library Heritage collection Location 11a
- [b] Wallaceville School Attendance Register January – December 1919 – teacher Edith M Johnson – no reference source on recollect
- [a] January 1920 to 17 December 1920 Teacher J W C BRODIE Register of Daily Attendance – UHCC Library Heritage collection Location 11a
- [a] 01 February 1921 to 30 December 1921 Teacher J W C BRODIE & Ellen M ENGSTROM Register of Daily Attendance – UHCC Library Heritage collection Location 11a
- [b] Wallaceville School Attendance Register February – December 1921 – teacher J M (or W) Brodie – no reference source on recollect but scanned
- [a] January 1922 to 31 December 1922 Teacher Ellen M ENGSTROM Register of Daily Attendance – UHCC Library Heritage collection Location 11a
- [b] Wallaceville School Attendance Register January – December 1922 – teacher Ellen M Engstrom – no reference source on recollect but scanned
- [a] 05 February 1924 to 19 December 1924 Teacher O J SCHOLLES Register of Daily Attendance – UHCC Library Heritage collection Location 11a
- [b] Wallaceville School Attendance Register February – December 1924 – teacher O I Scoles – no reference source on recollect but scanned
- [a] 15 April 1925 to 28 December 1925 Teacher D W SAUNDERS Register of Daily Attendance – UHCC Library Heritage collection Location 11a
- [b] Wallaceville School Attendance Register April – December 1925 – teacher D M Saunders – no reference source on recollect but scanned
- [a] Examination Register Wallaceville School Classes All from 01 January 1933 to April 1933 Teacher J B CARR – UHCC Library Heritage collection Location 11a
- [b] Wallaceville School Examination Register 1933 – 1937 – teacher not recorded – no reference source on recollect but scanned
- [a] Brochure 1903 - Union Steam Ship Co of New Zealand Ltd Return Tickets will be issued to School Teachers during recognised School Holidays (2 copies in envelope)

(Reference UH City Library Heritage collection Location: 11a = Wallaceville School Attendance Registers January 1882 – December 1925 & Examination Registers 1933 – 1937)

Archives NZ Wellington Office – Wallaceville School

- R12554638 date 1964-1964 Primary Schools Wellington Buildings Wallaceville box 42 part 1 record number 7/6 = **access open**
- R84823 date 1880-1939 School Buildings and Sites Education District Wellington and Marlborough Wallaceville School box 1 = **access open**
- R16801509 date 1915-1938 Homes and Schools Salvation Army Boy's Home Island Bay now at Wallaceville [includes inspectors reports for wider wellington] box 30 former archives reference CW1 record number 40/6/25 = **access open**
- R21562238 date 1921-1937 Individual School Files (Staffing) Wallaceville box 315 = access may be restricted
- R21564609 date 1919-1981 Closed School Files Wallaceville Site box 435 record number 1 = access may be restricted
- R21564610 date 1923-1981 Closed School Files Wallaceville Residence box 435 record number /7 = access may be restricted

Archives NZ Wellington Office – Wallaceville Playcentre

- R25636016 date 2006-2006 ET63445 – 10/07/2006 Wallaceville Playcentre images scanned available on website IE35903583 = **access open**

- R25636009 date 1997-1997 ET 43438 28/10/1997 Wallaceville Playcentre images scanned available on website IE35903562 = **access open**
 - R25636014 date 2003-2003 ET 63443 13/10/2003 Wallaceville Playcentre images scanned available on website IE35903577 = **access open**
 - School Buildings and Sites Education District Wellington and Marlborough Wallaceville School Department of Education Central Regional Office 1880-1939 agency AAQD series 23834 accession W3368 box 1
 - Homes and School – Salvation Army Boys Home Island Bay now at Wallaceville 1915-19385 Department of Education Child Welfare Divisions (Record Group)
 - Closed School Files – Wallaceville – Site 1919-1981 Wellington Education Board Residual Management Unit
 - Individual School Files (Staffing) Wallaceville 1921-1937 Wellington Education Board Residual Management Unit
 - Closed School Files Wallaceville Residence 1923-1981 Wellington Education Board Residual Management Unit
 - Primary Schools Wellington Buildings Wallaceville 1964- Wellington Education Board Residual Management Unit
-